

ZDD-1 Zenitel Display Door - 1

Mounting & Installation Manual

About

This document serves as a mounting and installation guide for the ZDD-1 IP Video Station.

For more information and instructions on configuration of the ZDD-1 go to wiki.zenitel.com.

Item Number	Item Name	Description
1008510101	ZDD-1	Zenitel Display Door - 1
1008140350	TA-35	ZDD-1 Onwall backbox

Safety Instructions

This manual contains important instructions that must be followed. These instructions are intended to ensure that the product is mounted and installed correctly to avoid equipment damage or property loss. Familiarize yourself with the components and follow the instructions step by step.



A note symbol indicates that extra care must be taken. Damage to equipment can occur, or it may not function as intended. Please read all warnings before installing this product.

Installation should only be carried out by qualified personnel with experience in low-voltage electrical systems. Ensure that the installer is familiar with local electrical codes and regulations.

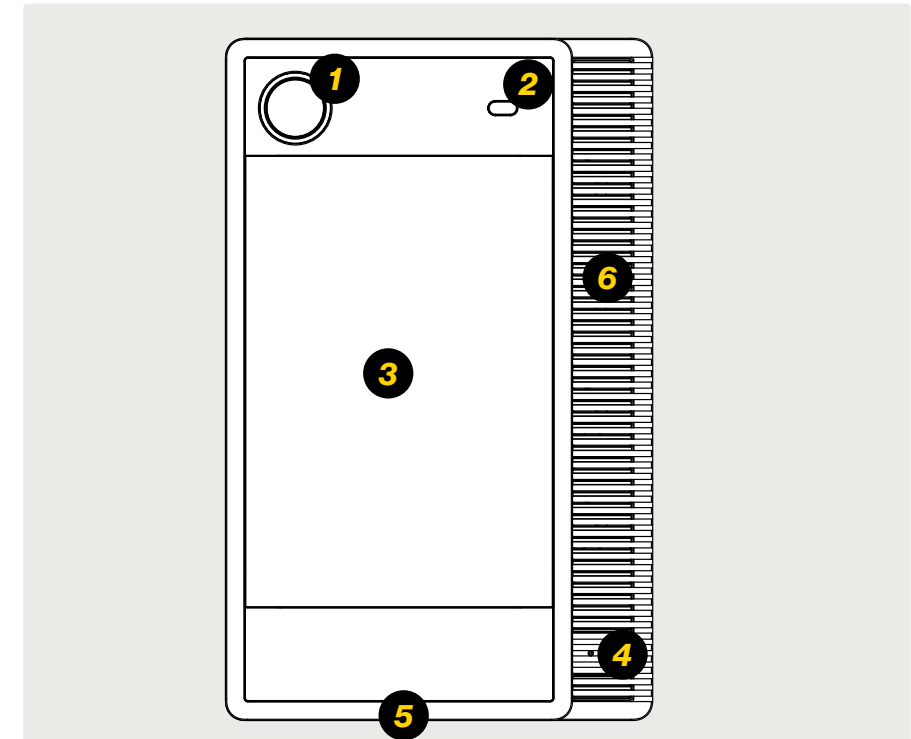
Make sure that the installation complies with all applicable local, regional, and national regulations regarding electrical installations and low-voltage systems.

After installation, conduct a thorough test of the intercom system to ensure proper functionality. Test communication, audio quality, and any additional features according to the provided instructions.

Zenitel takes no responsibility for damages caused by improper or inadequate installation.

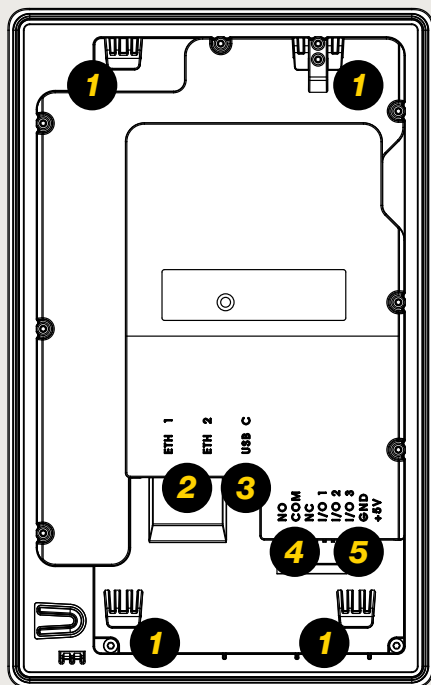
Description

Front



Item	Description
1	Wide angle lens
2	Ambient light sensor
3	7" touch display
4	Slot used for ejecting the ZDD-1 from the Onwall backbox
5	4 x MEMS omni directional microphones
6	4 x 4W Loudspeakers

Rear



Item	Description	Comment
1	Mounting hook	4x mounting hooks for attaching intercom to backbox
2	2x LAN ports	10/100/1000Mbps RJ-45 ports connecting to Ethernet. PoE+/PoE++ is supported.
3	USB-C	For future use. Max. current 900 mA.
4	Relay	Double Throw relay contact with 60W switching power. COM, NO, NC contacts are provided. Max: SELV, 2A, 60W.
5	I/O interface	3 general purpose I/Os. Each I/O can be configured either as an input or 12mA LED driver output

Mounting considerations

Check the specification of the product for the installation environment.

Choose a suitable location for the intercom system, try to minimize exposure to water sources, direct sunlight, extreme temperatures, and corrosive substances.



Ensure that the mounting surface is stable and can support the weight of the intercom station.



To achieve the IP66 rating the intercom must be mounted on a planar surface.



The ZDD-1 must be correctly mounted with the camera positioned on top to maintain the IP rating and ensure proper functionality of the mounting hooks.

Mount the intercom at a height and angle that provide optimal comfort for users during interaction. Consider the natural standing or sitting positions of users and adjust the mounting accordingly. It is recommended to mount the station so that the upper part of the screen is positioned at a height of approximately 120 cm. This ensures easy operation of the intercom for all users.

Installation

Prior to commencing the installation procedure, deactivate the power supply to both the intercom system and its associated devices. This precautionary measure ensures optimal safety throughout the installation process.



Ensure that all cables are properly routed and secured to prevent tripping hazards or damage. Avoid placing cables near heat sources, sharp edges, or areas where they might be pinched or crushed.

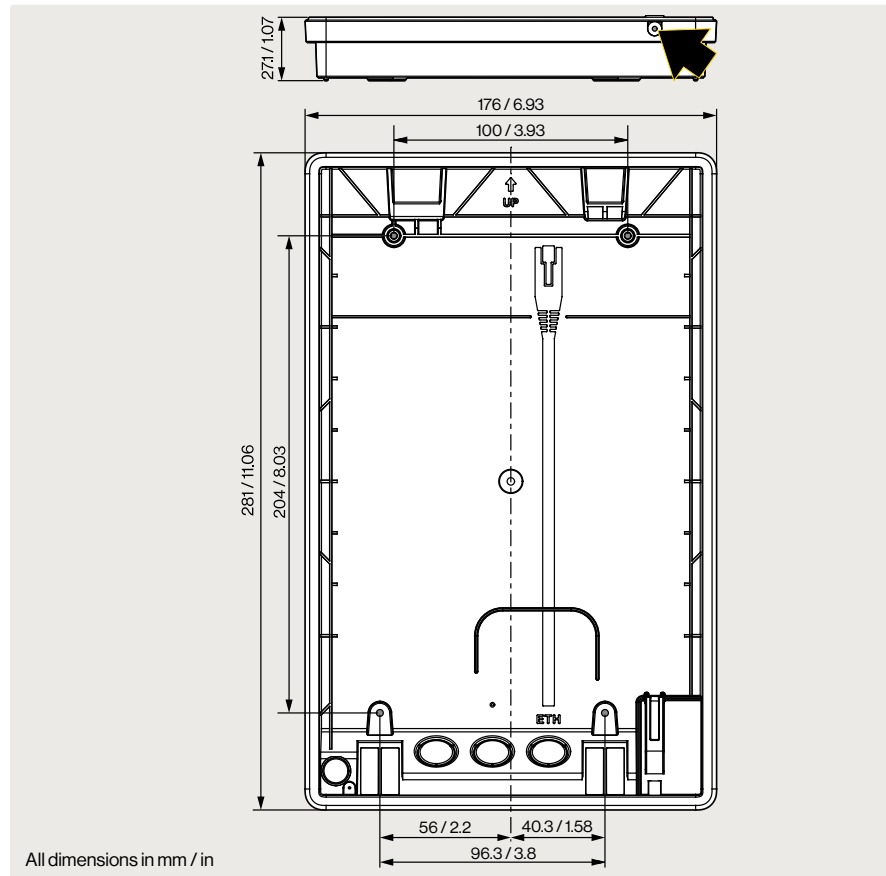
The **ZDD-1** must be powered by PoE+. This is done by connecting an Ethernet cable to one of the **LAN ports** of the station and a PoE switch.



To comply with EMC regulations, the ZDD-1 must be installed with a shielded Ethernet cable with grounding at the switch end.

Mounting

On-wall mounting



When mounting the ZDD-1 use the **TA-35, ZDD-1 Onwall backbox**.

Have the necessary cables ready before starting the mounting procedure.

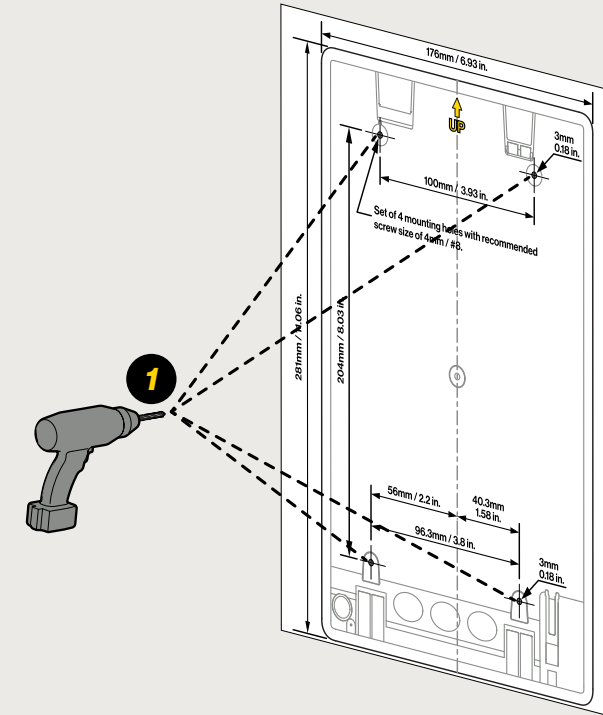


Hole for screw. Ensures that the **ZDD-1** is locked to the backbox.



Use 4mm or 5mm screws for mounting

1

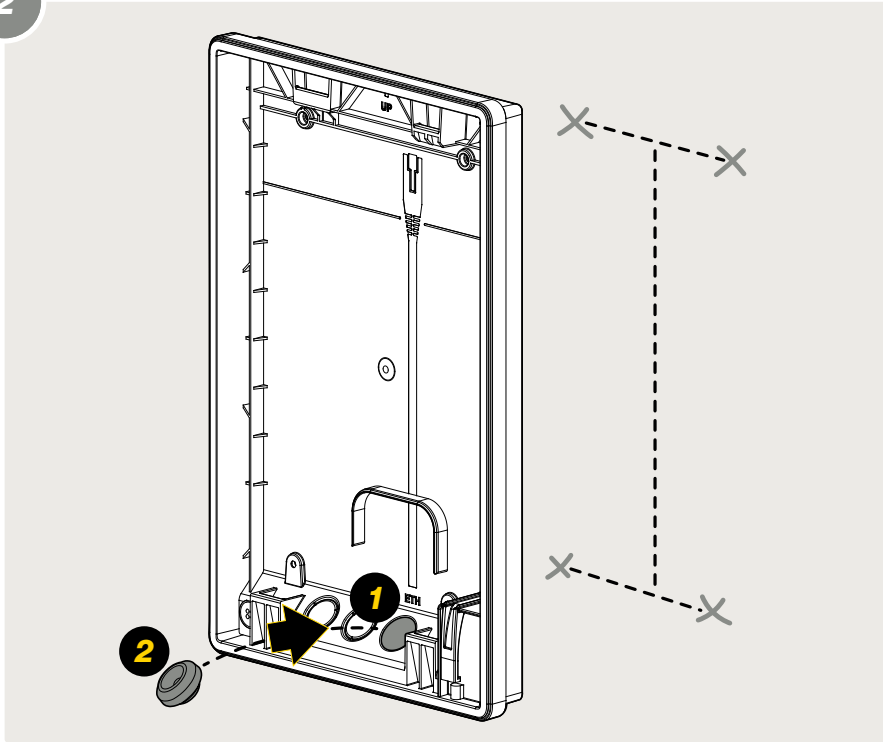


Create four marks or drill holes for the **TA-35 Onwall backbox**

1

Please use the provided **Mounting Template**. Ensure that the holes/ marks align precisely with the corresponding holes in the Onwall backbox when it is correctly oriented.

2



1

Prepare the pre-punched holes and opening in the back box for wiring. If only the power and network connection is required, utilize the hole labeled **ETH**.

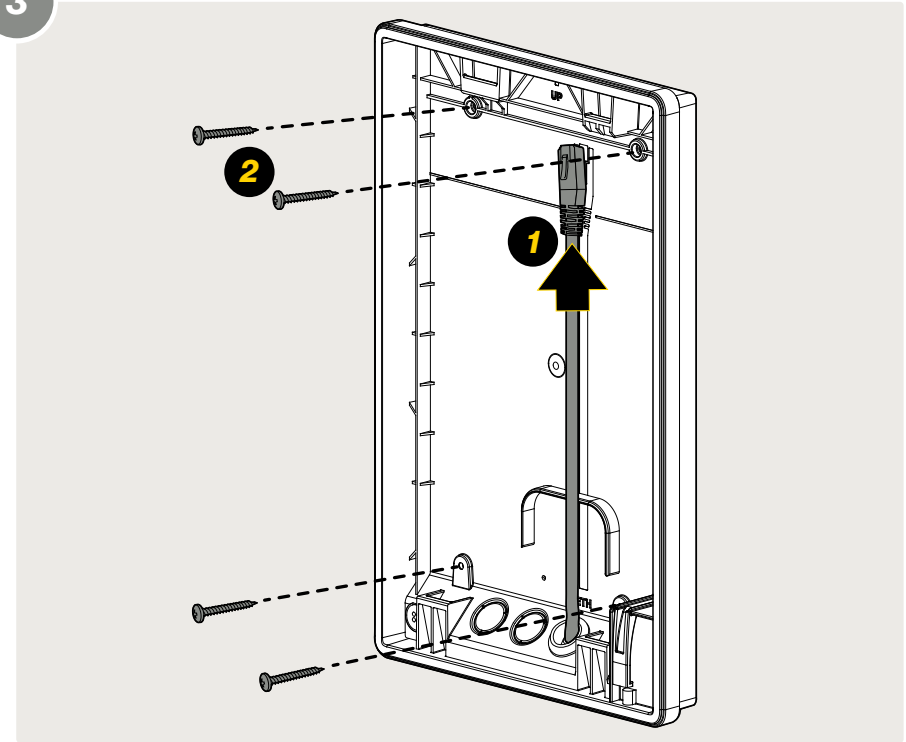
2

Fix the attached **M16 Grommet** to the cable hole(s)



To achieve the IP-66 rating, the provided M16 grommets must be fixed in the hole(s)

3



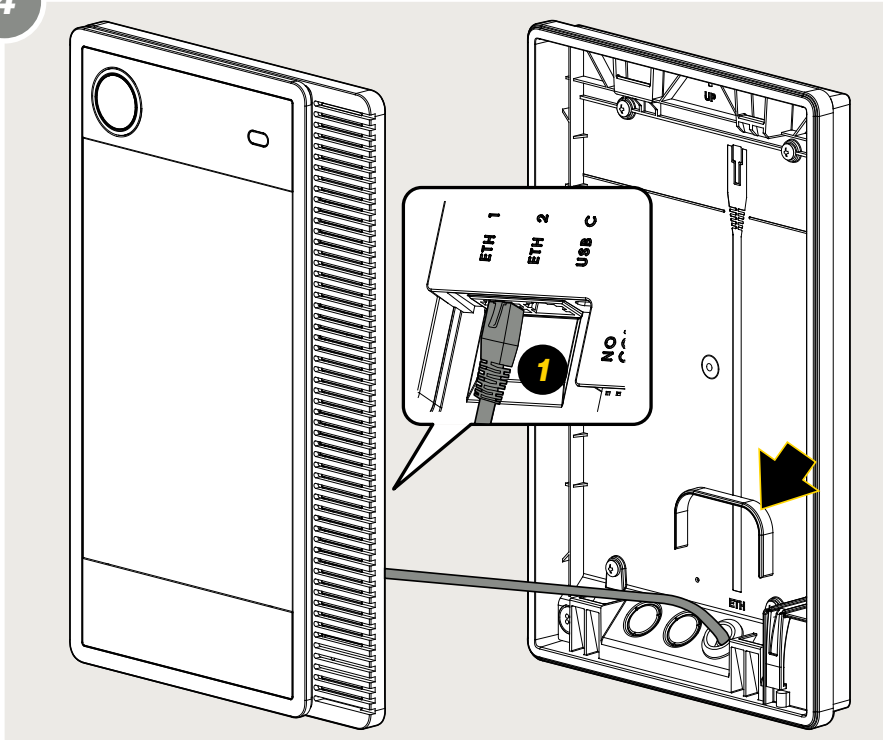
1

Pull the cable through the cable opening, leaving the cable length on the inside of the box as long as the Ethernet-cable printed on the back of the box indicates.

2

Attach the back-box to the marked location

4



1

Plug the Ethernet cable into the **LAN port** marked **ETH 1**

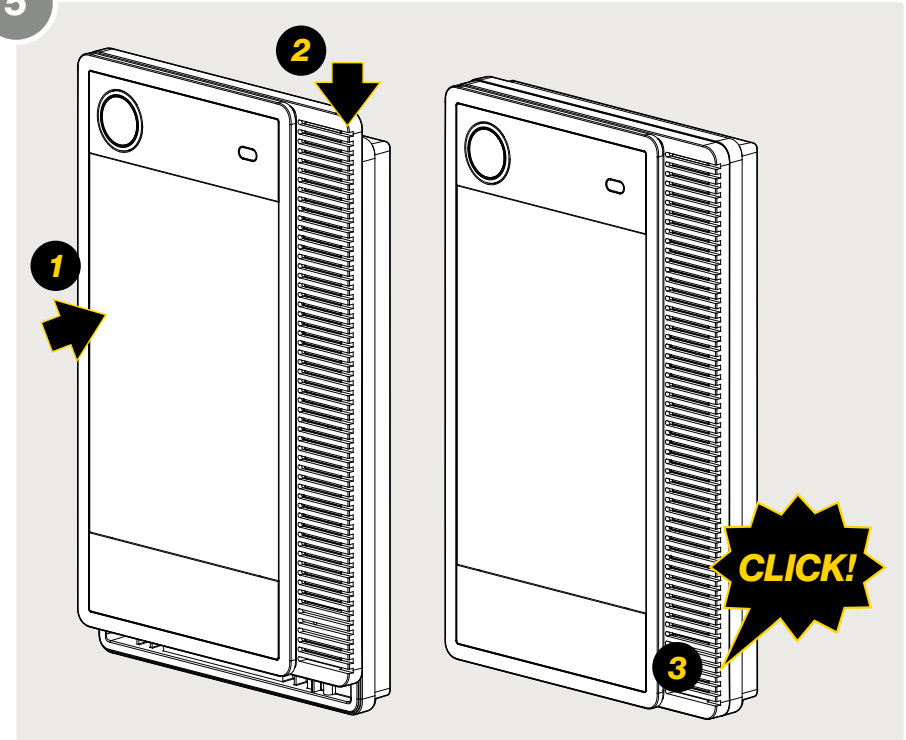


Terminate all other wires according to the planned system setup



Make sure that all the wires are fitted under the u-shape when the ZDD-1 is placed onto the back-box.

5



1

Insert the station at the top

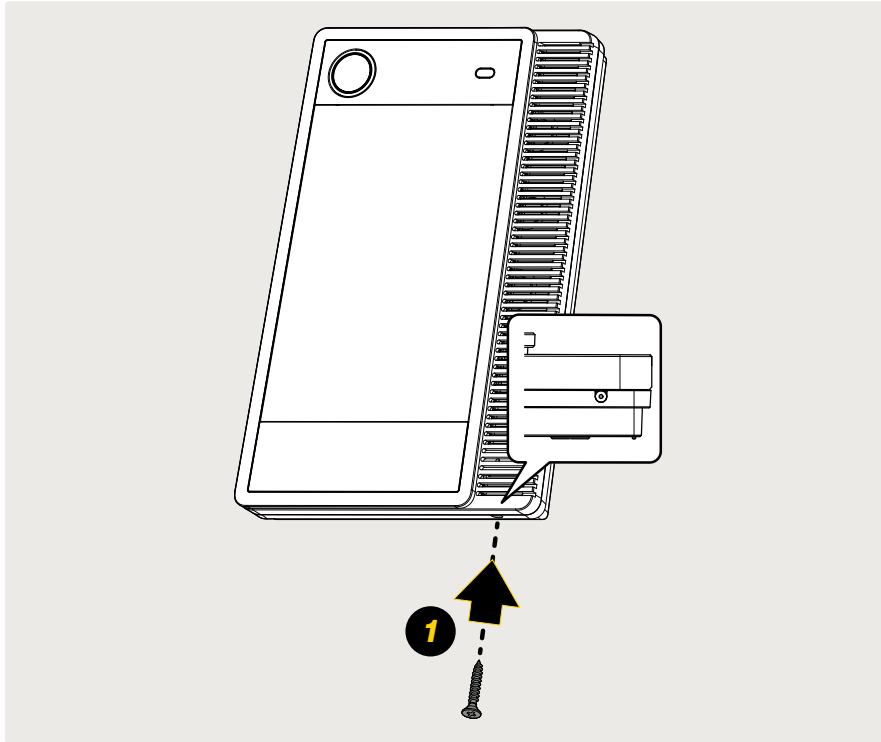
2

Push the station down

3

A 'click' should be heard when the station is properly attached

Lock the station to the Onwall backbox



1

If there is a need to lock the ZDD-1 to the onwall backbox, a screw can be fitted into the dedicated hole located underneath the backbox as shown.

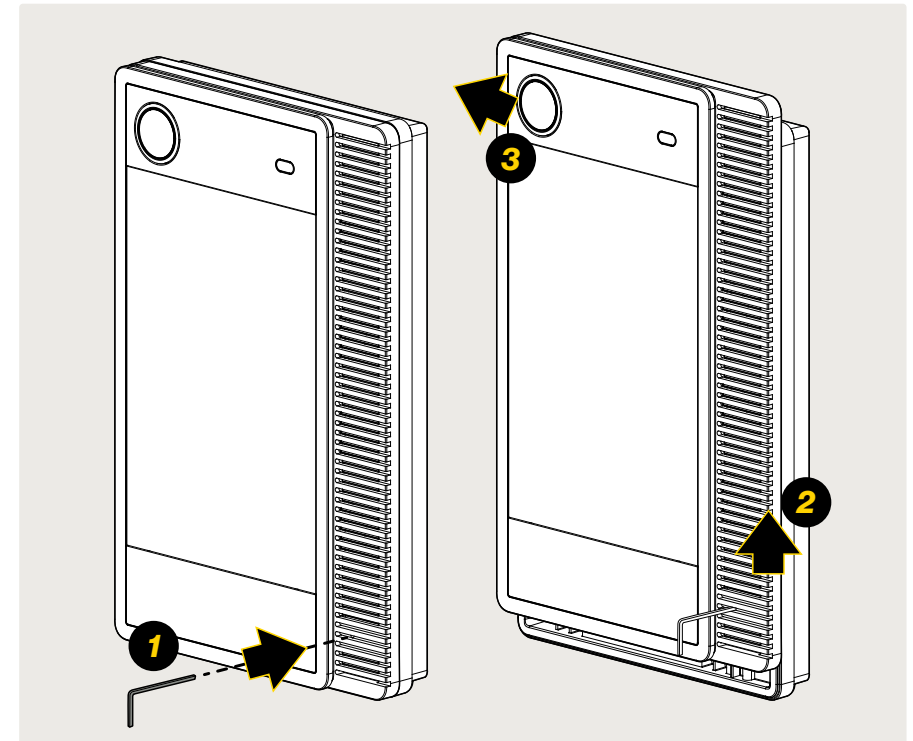


Use the provided screw or an alternative screw with a maximum length of 16mm.



Apply a maximum of 0.6Nm torque when tightening the screw

Detach ZDD-1 from Onwall backbox



Before attempting to detach the intercom, ensure that any screws locking the station to the backbox are removed.

1

Insert the provided tool into the slot situated within the grille on the right-hand side of the station.

2

Push up

3

Detach the station

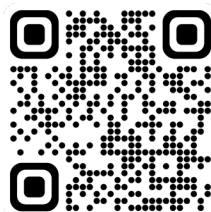
Configuration

When the **ZDD-1** is connected to the network, its IP address is automatically obtained from a DHCP server or an IP address in the range 169.254.xx will be assigned.

To prompt the station to announce its IP address, simply press the **Touch Display** located on the station.

The ZDD-1 is capable of operating in various modes, including **IC-EDGE** and **SIP**. To register with **Zenitel Connect Pro** the ZDD-1 must be in factory default mode. Setup and configuration will be managed through Zenitel Connect Pro. Enter the link or scan the QR-code to go to Zenitel Wiki for configuration instructions.

Zenitel Wiki: wiki.zenitel.com



Specifications

Technical specifications	Value
Dimensions (HxWxD): With Onwall backbox:	281 x 176 x 44.5 mm / 11.06" x 6.93" x 1.75" 281 x 176 x 48.5 mm / 11.06" x 6.93" x 1.91"
Weight	1.7 kg / 3.75 lb
IP Rating	IP66
IK Rating	IK08
Relative humidity	< 95% not condensing
Operating temperature range	-25° to 55° C / -13° to 131° F
Encapsulation material	Faceplate: ASA, Glass Base / Frame: Aluminium
Power options	PoE++

Contact information

Visit zenitel.com to find your country's contact information.



Zenitel hereby declares that this product is in compliance with the essential requirements and other relevant provisions of directive 2014/53/EU and all other applicable EU directive requirements. The complete declaration can be found at www.zenitel.com



The WEEE Directive does not legislate that Zenitel, as a 'producer', shall collect 'end of life' WEEE.

This 'end of life' WEEE should be recycled appropriately by the owner who should use proper treatment and recycling measures. It should not be disposed to landfill.



Many electrical items that we throw away can be repaired or recycled. Recycling items helps to save our natural finite resources and also reduces the environmental and health risks associated with sending electrical goods to landfill.

Under the WEEE Regulations, all new electrical goods should now be marked with the crossed-out wheeled bin symbol shown.

Goods are marked with this symbol to show that they were produced after 13th August 2005, and should be disposed of separately from normal household waste so that they can be recycled.

