

Innodisk

CF Card Format Procedure

1. Purpose:

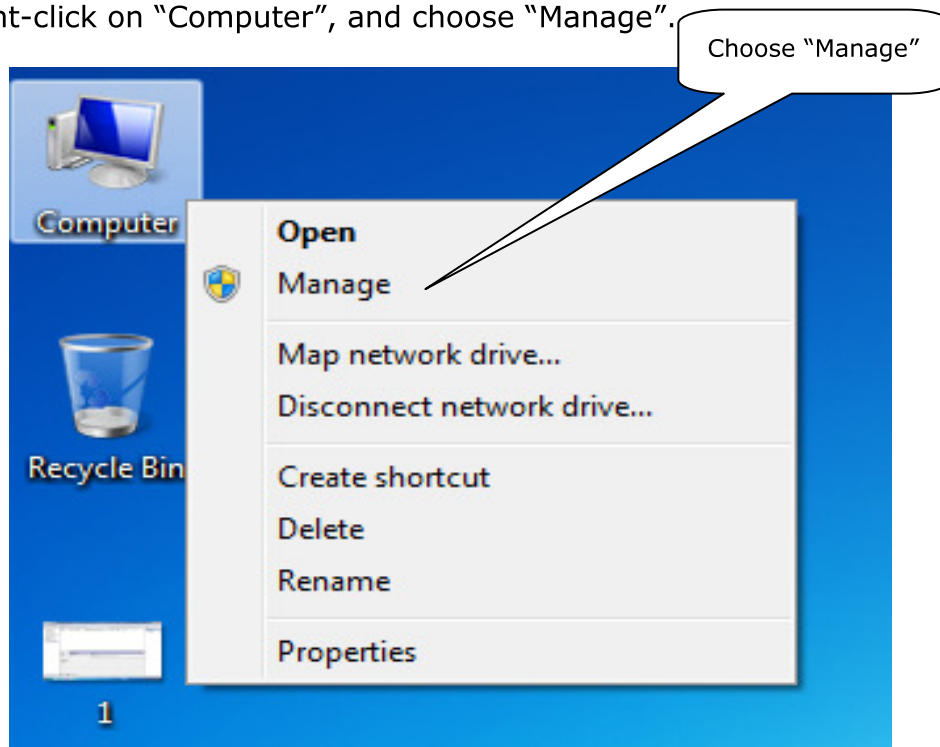
Formatting is the procedure of preparing a brand new CF card for initial use.

2. Connecting:

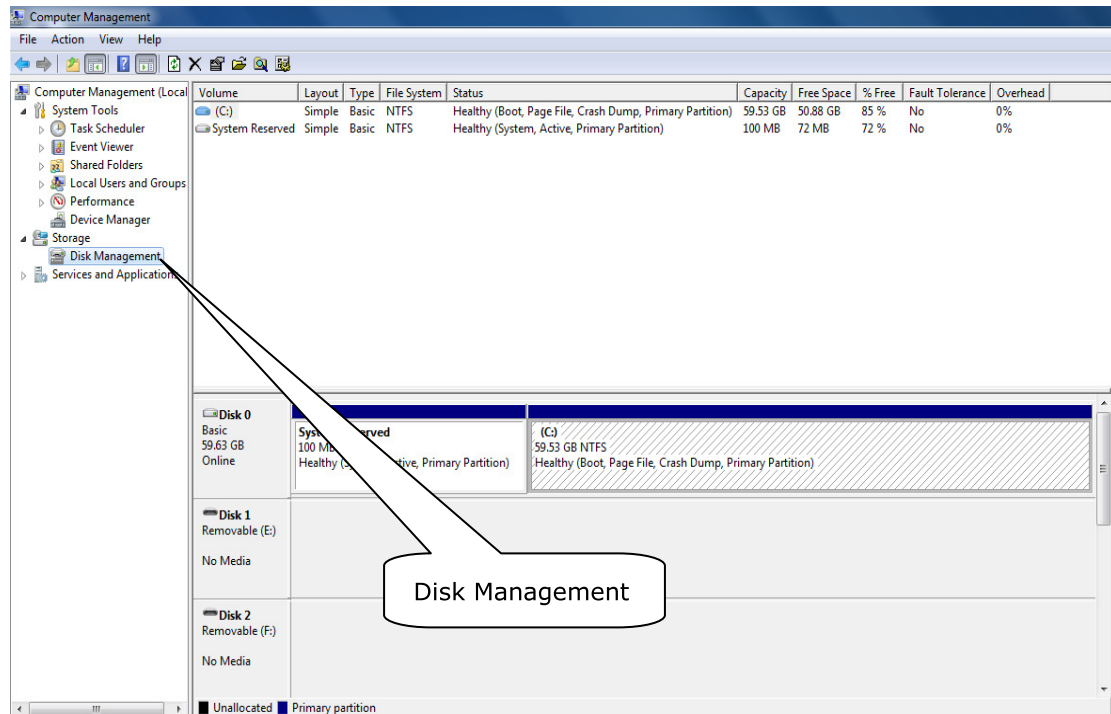
First connect card reader with computer, and then insert CF card into card reader.

3. Procedure:

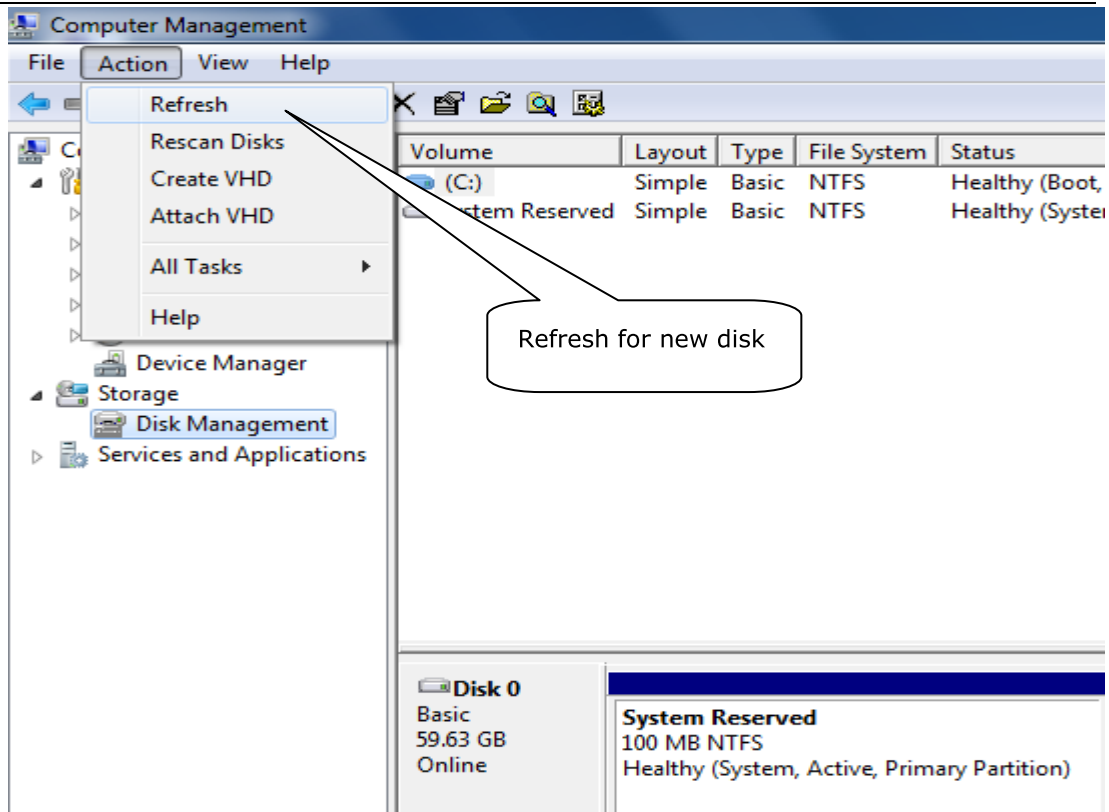
1. Disk will not show in "Computer Management" because the brand new CF card has no partition.
2. Right-click on "Computer", and choose "Manage".



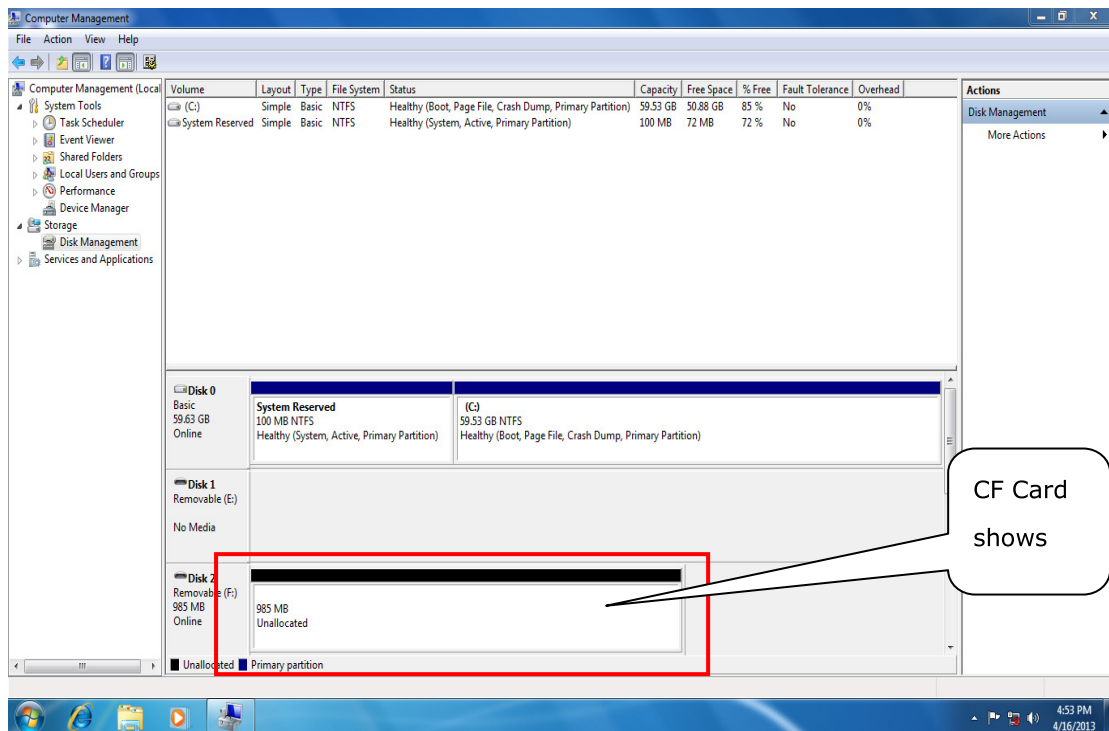
3. Choose "Disk Management" to look at all disks



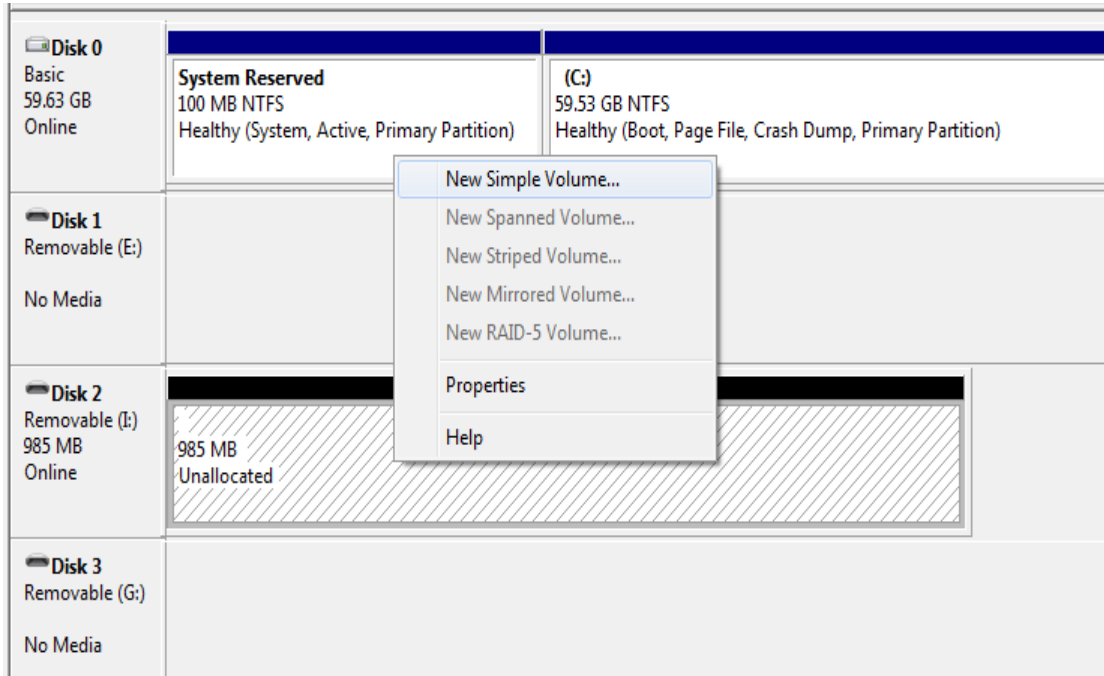
4. Choose "Refresh" under [Action] tag to scan for new disk



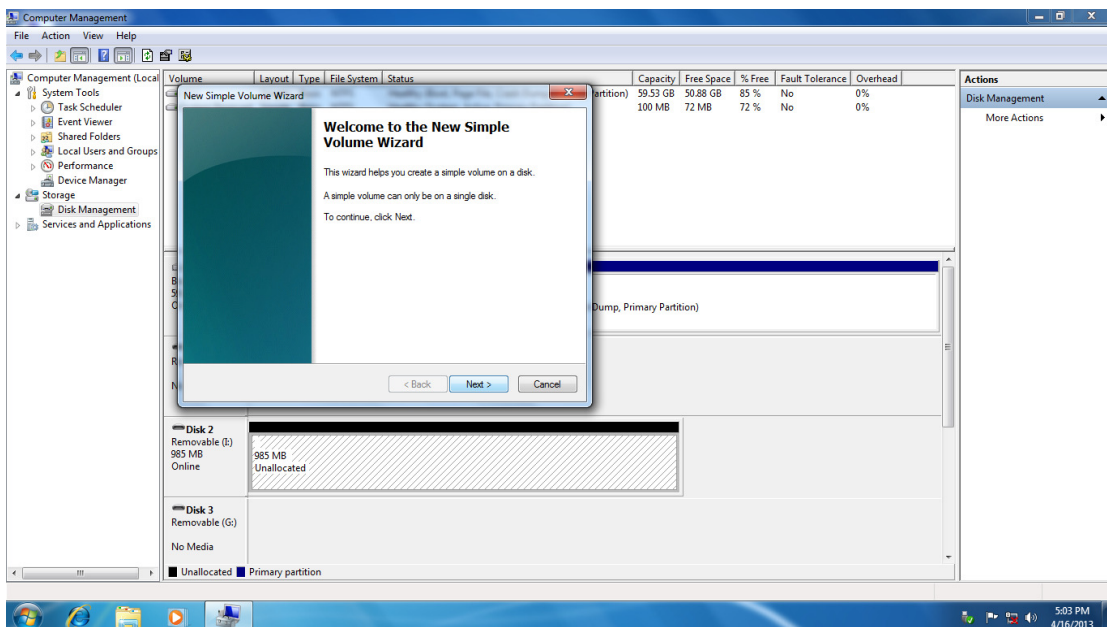
5. New found disk will show up in the list.



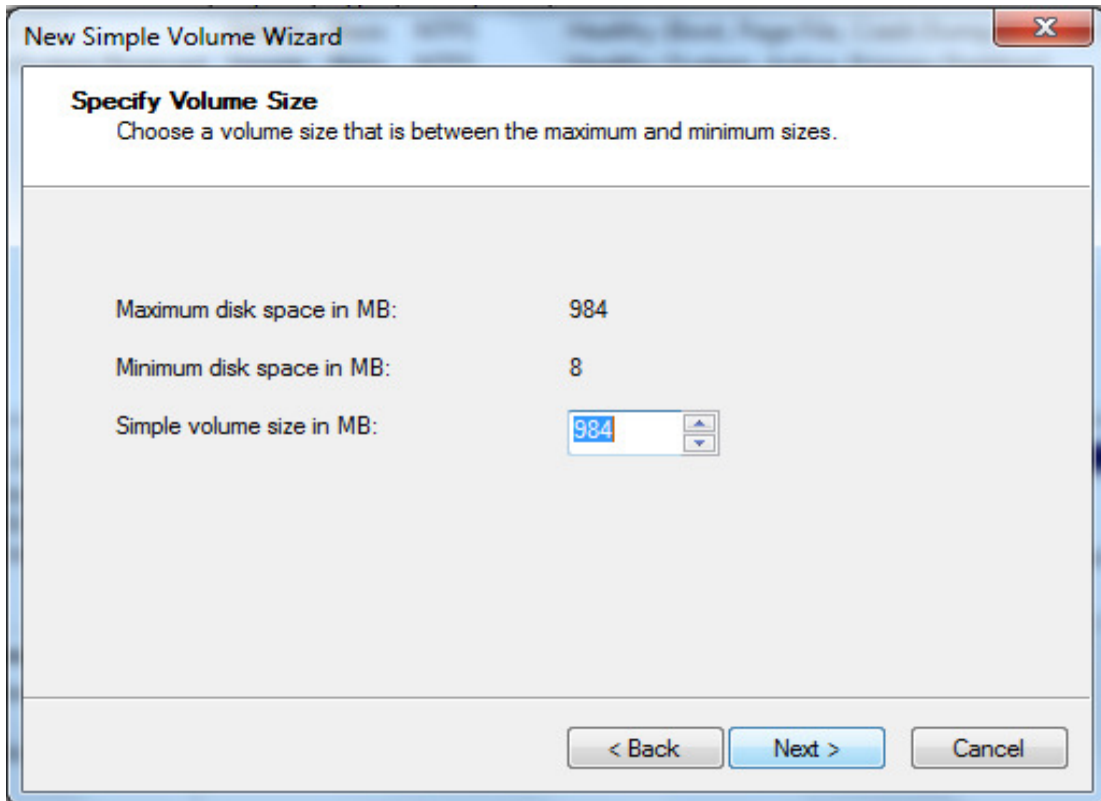
6. This brand new CF card needs to be formatted for initial use. So right click on it and choose "New Simple Volume".



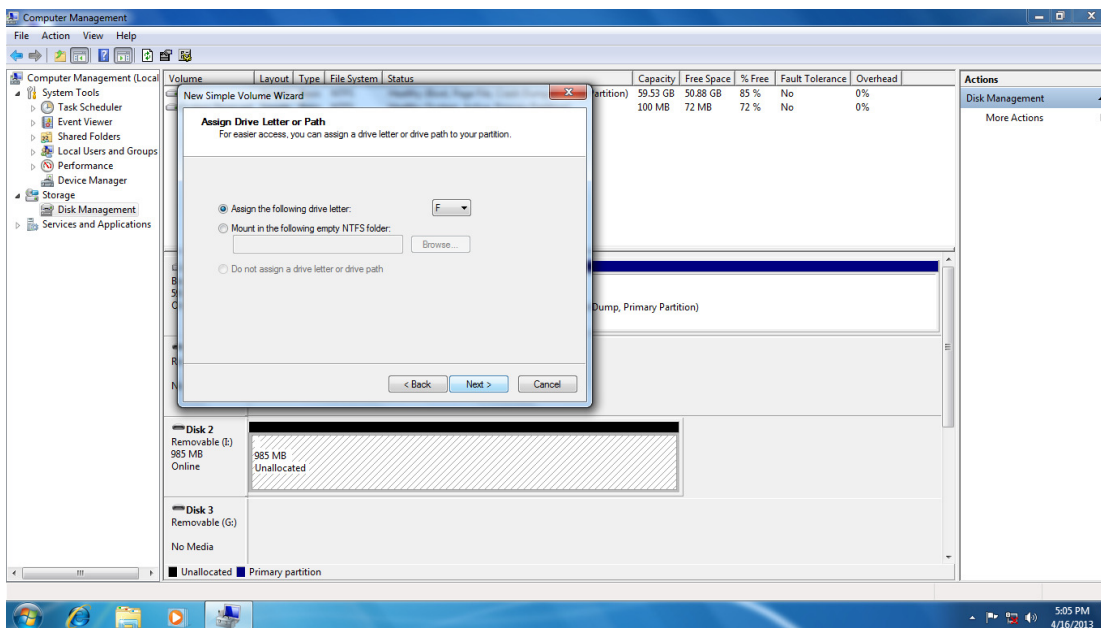
7. Choose "Next" when system shows window below.



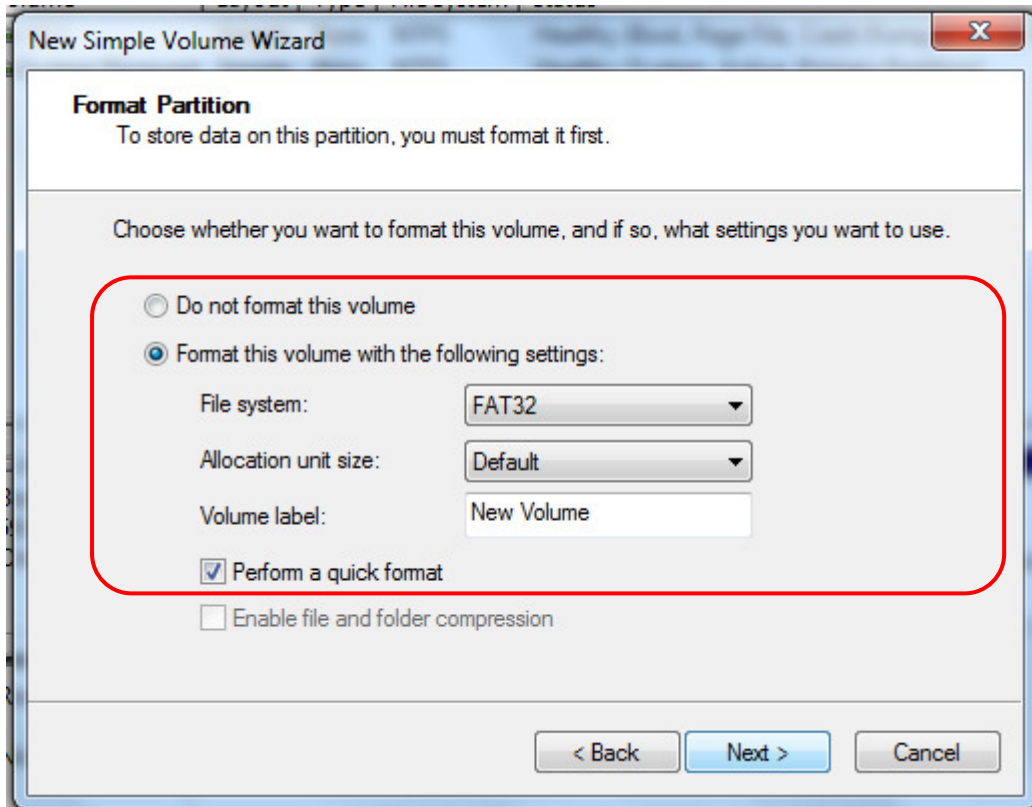
8. Insert volume size then "Next".



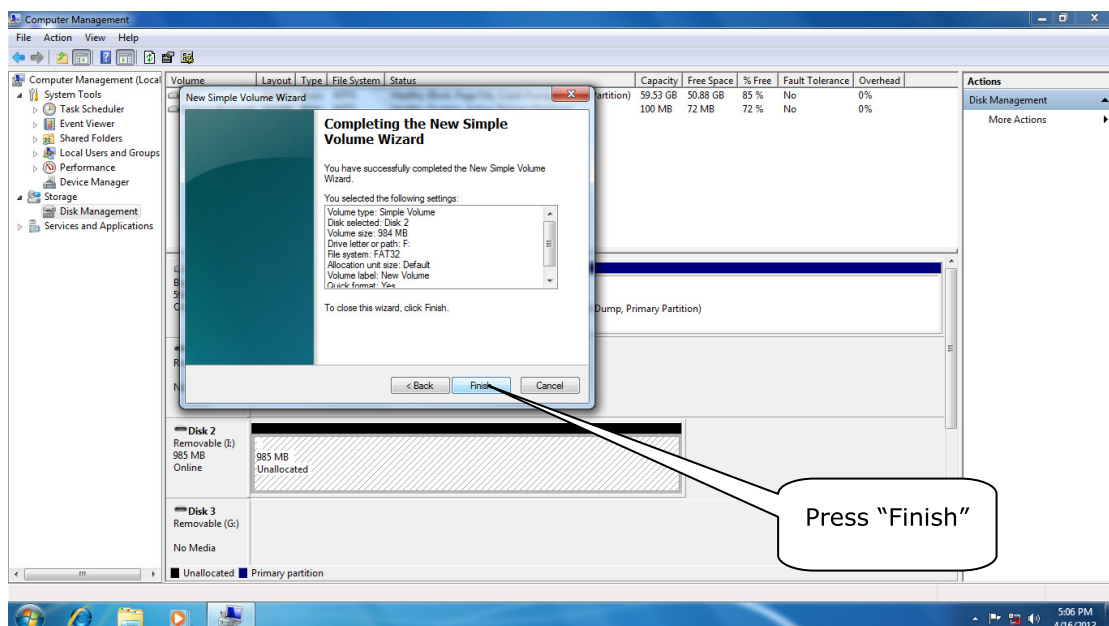
9. Assign drive letter.



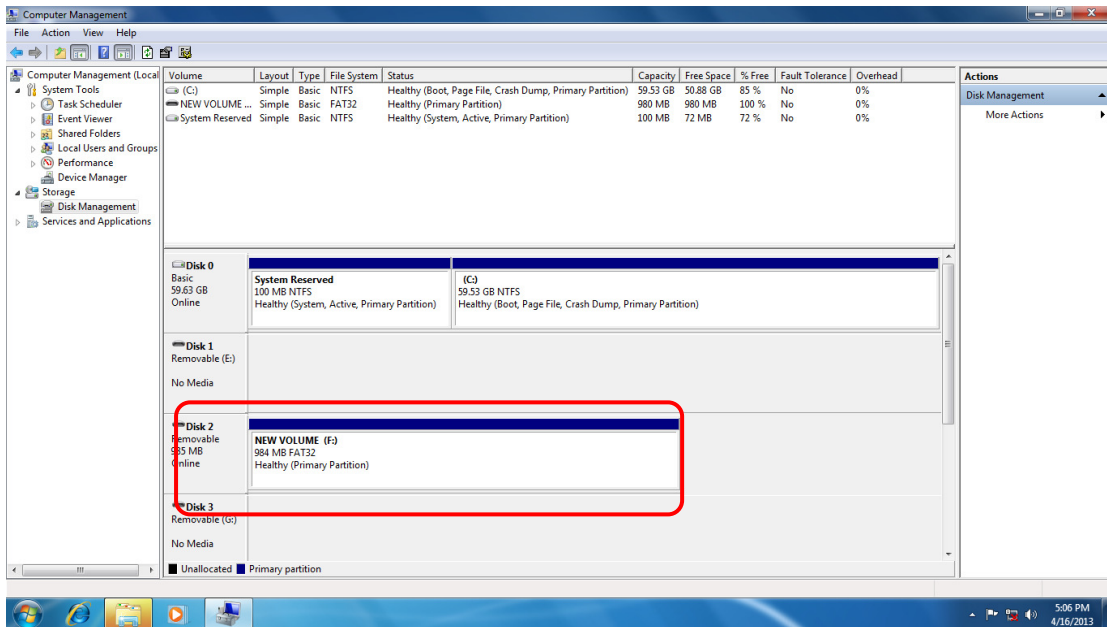
10. Choose file system, and check "Perform a quick format" before pressing "Next".



11. Press "Finish" to confirm proceeding the format.



12. To follow steps above for formatting CF card and setting up a new disk partition. The capacity and status of the disk will show as well in the end.



InnoDisk appreciates your feedback. We will keep improving with your help. We will keep doing our best to resolve the quality issue from customers.