

GRÄSSLIN

# THE **talento smart** TIME SWITCH



ON BOARD TECHNOLOGY



**NEW**

talento smart

**B10 mini**

## **BLUETOOTH TECHNOLOGY**

WIRELESS DATA TRANSMISSION

## **MOBILE APP**

PROGRAMMING

FOR TABLETS, SMARTPHONE AND PC

## **MODULAR SYSTEM**

EXPANDABLE OVERALL SYSTEM

WITH UP TO 8 CHANNELS

## **DATA TRANSMISSION**

VIA LAN NETWORK AND CLOUD

CONVENIENT DATA TRANSFER

GATEWAY FOR REMOTE ACCESS

# **talento smart:** Time Switch Technology for Professionals

---

Digital DIN-rail time  
switches with Grässlin  
smartlink technology

---

## The right choice for all time switch tasks

The new digital DIN-rail time switches from the talento smart product family were developed with the electrician in mind. They feature a host of technical innovations, enabling electricians to complete time switch tasks in building automation quicker and easier.

---

*Quick and easy programming, installation and  
adjustment of time switch programs*



## High flexibility for optimal use

With the talento smart product line, Grässlin is one step ahead of the competition when it comes to intelligent time control. From simple to complex applications, the talento smart product line meets all the needs of a modern electrical installation. Classic applications include

### CONTROLLING:



#### PUMPS

for water treatment



#### LIGHT INSTALLATIONS

in streets, parks and parking areas



#### DOORS AND GATES

with different opening times



#### ACOUSTIC SIGNALS

like school bells



#### LIGHTING

for shop windows and advertising spaces

**BE  
SMART  
ANYTIME talento  
smart**



## Clear-cut programming and wireless data transfer

talento smart DIN-rail time switches and bluetooth technology:  
This combination enables electricians to complete all programming-related tasks  
faster and more efficiently, thereby optimizing the overall flow of a project.

**FREE  
MOBILE APP &  
PC SOFTWARE\***

**NO ADDITIONAL  
HARDWARE  
REQUIRED**



\* with Bluetooth® enabled PCs



### PC SOFTWARE

#### TALENTO SMART PC SOFTWARE

The free talento smart PC software enables electricians to program functions on their PC prior to installation and then either transfer them wirelessly with Bluetooth® enabled PCs to the time switch or send them by email to the site.

### MOBILE APP

#### TALENTO SMART MOBILE APP

The free talento smart mobile APP offers electricians a maximum of flexibility: They can program time switch programs whenever and wherever they wish or export and customize programs from existing installations.



# MOBILE APP PROGRAMMING

PROGRAMMING WITH TABLET,  
SMARTPHONE AND PC  
**NO ADDITIONAL HARDWARE REQUIRED**



Wireless programming,  
transfer and export  
of programs without  
additional hardware

Grässlin  
smartlink  
offers fast  
and easy ...

ON BOARD TECHNOLOGY



The Bluetooth® word mark and logos are registered trademarks owned by Bluetooth SIG, Inc. and any use of such marks by Grässlin GmbH is under license. Other trademarks and trade names are those of their respective owners.



### TRANSFER OF PROGRAMS

Creating programs on the notebook, tablet or smartphone is easy and comfortable, and allows the wireless transfer to the time switch .



### DATA EXPORT

Thanks to Grässlin smartlink, existing program details can be exported quickly and completely to a smartphone, even when the cabinet door is closed.



### COPYING PROGRAMS

Grässlin smartlink allows for an easy export of program data from a time switch to a smartphone and vice versa.



 Developed, assembled  
and certified in Germany

Casing, controls and display elements as well as bolted connections:  
Development, assembly and quality control take place at our facility  
in St. Georgen in the Black Forest.

**8  
YEARS  
POWER-  
RESERVE**

**LONG-LIFE-BATTERY**

The date and time are retained  
even if the power fails.



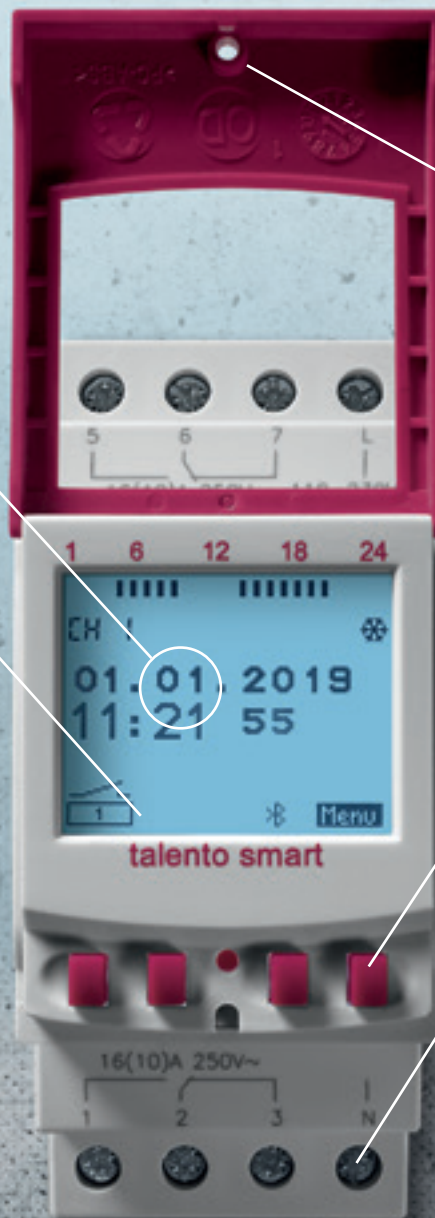
**PROVEN CLICK-SYSTEM**

Quick and easy installation on  
DIN-rail.



# HIGH RESOLUTION DISPLAY

DOT-MATRIX WITH LED BACKGROUND LIGHTING



## TAMPER-SAFE BY SEALABLE CASING

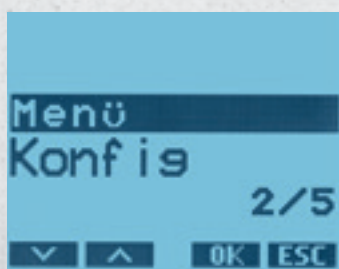
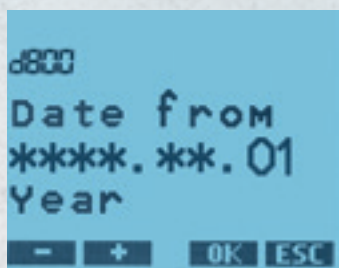
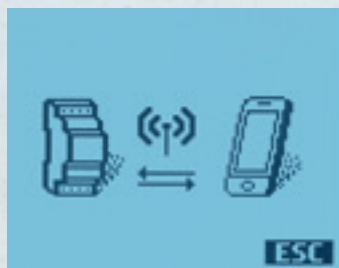
Secure-PIN protection prevents any unauthorized access.

## SOFT-TOUCH CONTROLS WITH OPTIMIZED PRESSURE POINT

Reliable feedback prevents errors in operating the time switch.

## TERMINAL ALLOWS FOR VARIOUS SIZE WIRE GAUGES

Suitable for international installations.



ON BOARD TECHNOLOGY



## WIRELESS DATA TRANSFER AND EXPORT

The Bluetooth® word mark and logos are registered trademarks owned by Bluetooth SIG, Inc. and any use of such marks by Grässlin GmbH is under license. Other trademarks and trade names are those of their respective owners.



## More freedom by innovative programming functionalities

The new digital DIN-rail time switches from the talento smart product family feature a range of innovations, opening up new programming functionalities for electricians.

### WILD CARD

#### WILDCARD-FUNCTION

This function utilizes the principles of programming with wildcards. It enables electricians to define recurring, date-based events for an indefinite period by once-off programming. This not only reduces the time spent on programming, but also the amount of memory required.



Jeder 1. Tag im Monat, jedes Jahr  
 \*\*\*\*. \*\*.01 – \*\*\*\*. \*\*.01



Jeder 1. Tag im Monat, im Jahr 2016  
 2016. \*\*.01 – 2016. \*\*.01

#### PROGRAMMING WITH OR WITHOUT A DATE

With or without a date? talento smart checks this setting at the outset. Electricians now have access to an unlimited combination of all programming options. A consistent operating philosophy across all devices warrants easy and quick programming.



01.01.2016 – 01.01.2016	<- single date
06.01.2016 – 06.01.2016	<- single date
24.12.2016 – 26.12.2016	<- range of date
:	:
ON	08:00 1,2,3,4,5 1,2
OFF	10:00 1,2,3,4,5 1
ON	16:00 1,2,3,4,5 1
OFF	23:00 1,2,3,4,5 1,2
IMP	23:00 1,2,3,4,5,6,7 1 10 sec
:	:
:	:
Prio	high



# COMFORT SETUP

## EASE OF USE

INTUITIVE, HIGHLY CONVENIENT OPERATION

PROGRAMMING ON:

**TIME SWITCH  
SMARTPHONE  
TABLET  
PC**





## Improved user interface and extended functionality

With talento smart DIN-rail time switches, electricians enjoy more than just flexible programming. When it comes to making work easy, the developers at Grässlin have come up with truly innovative solutions.





### LAN GATEWAY TO IP-NETWORK AND CLOUD

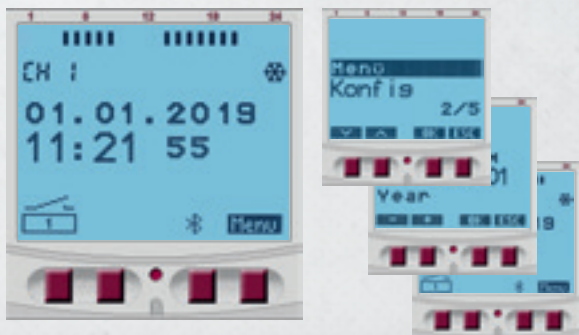
The LAN module is completely freeing the specialist from the need to be on-site. In addition, the installer can group together tasks and simultaneously adjust the timers at multiple locations to a new programme. The LAN gateway can be scaled from 2 to 40 channels for each module. It can be configured on the device itself, or using the app or PC software. Each LAN module has an RJ45 socket for connecting to a network. The status and configuration can be viewed on the high-resolution display. If you opt for the IoT solution, you also have a multiple encrypted connection, ensuring greater security. Time synchronisation takes place via NTP server.



### WIRELESS DATA TRANSFER

Commissioning and operating a time switch involves many time-consuming steps. These include the programming of new devices, the adaptation of existing program installations or the copying of existing programs. Thanks to Grässlin smartlink, electricians can now greatly reduce their workload.

Grässlin smartlink enables electricians to wirelessly transfer a program configured on their smartphone, tablet or Bluetooth®-enabled PCs to a talento smart time switch. Grässlin smartlink also makes exporting existing programs quick and easy.



### ICON-BASED STATUS INFO

Summer time, winter time, channel status as well as connection and transfer status are displayed by intuitive icons.

### CONTEXT-SENSITIVE CONTROLS

Electricians are able to operate all programming steps intuitively and easily with four pressure-point optimized buttons.

### COMPREHENSIVE FUNCTIONALITY



**ON/OFF function**  
shortest switch time 1 min.



**RANDOM-switching**  
for randomized changes of the on-off times. Fix ON/OFF times



**PULSE-function**  
one-time switching operation for a duration of 1 sec to 2 h



**CYCLE-function**  
recurring on/off duration of up to 2 h



**DATE/NO-DATE function**  
unlimited combination with other functions



**ASTRO-function**  
set to local sunrise/sunset times



## Trouble-free expansion thanks to intelligent system products

The S25 DIN-rail timer is a highlight of the talento smart product line. This system version enables specialists for electrical installation to create an overall system with up to 8 channels, when combined with the CE2 expansion modules. The PC software and freely available apps for Android and iOS ensure simple and convenient operation and programming.

Up to five talento smart S25 can be connected to the talento smart LAN module.



**800  
MEMORY-  
SPACES**

**IDEAL FOR LARGE  
PROPERTIES**



### ADDED SAFETY

The overall system can also be protected by a PIN-entry system.

The PIN protection can be unlocked from the talento smart S25, via the mobile app or via the PC software.



### PROGRAMMING ALL CHANNELS

If one or more channel extensions are connected to the talento smart S25, the corresponding number of channels is displayed on the app.



# MODULAR SYSTEM

## SYSTEM DIN-RAIL TIMER & 2-CHANNEL EXPANSION MODULES

### SYSTEM DIN-RAIL TIMER S25

Available in a 2-channel version with 800 memory spaces.

### EXPANSION MODULE CE2

Contains 2 channels and enables modular system expansion.

### SYNCHRONISATION

If necessary, all the channels can be synchronised; this is ensured by multiple time synchronisation operations each day.

### HIGH RESOLUTION DISPLAY

Displays which DIN-rail timer the module is connected to and provides information about the channel status and hour meter.



## Easy as can be. Transferring programmes via gateway for remote access

In the talento smart LAN module, the talento smart DIN-rail timer system series welcomes a new innovative product to the family. The new LAN module enables rapid and easy data transmission via LAN network and cloud. Which makes life significantly easier for installers.

The talento smart LAN module can be used to create different templates on a PC and then connect these to up to five talento smart S25 timers, without any trouble. The perfect solution for managing complex application areas, such as supermarkets, chain stores, schools and large administration buildings.

### GATEWAY FOR REMOTE ACCESS

Can link to up to five talento smart S25



### REMOTE ACCESS VIA LAN-NETZWERK AND CLOUD

Configuration and programming via network

### TALENTO SMART PC SOFTWARE

Grässlin provides the PC software for creating switching programmes to specialists for heating systems, free of charge. A clear, user-friendly menu helps users create a programme. The programme is then transferred to the desired destination via a LAN network using the LAN module, without much effort. The software is available for our customers to download from the Grässlin website.

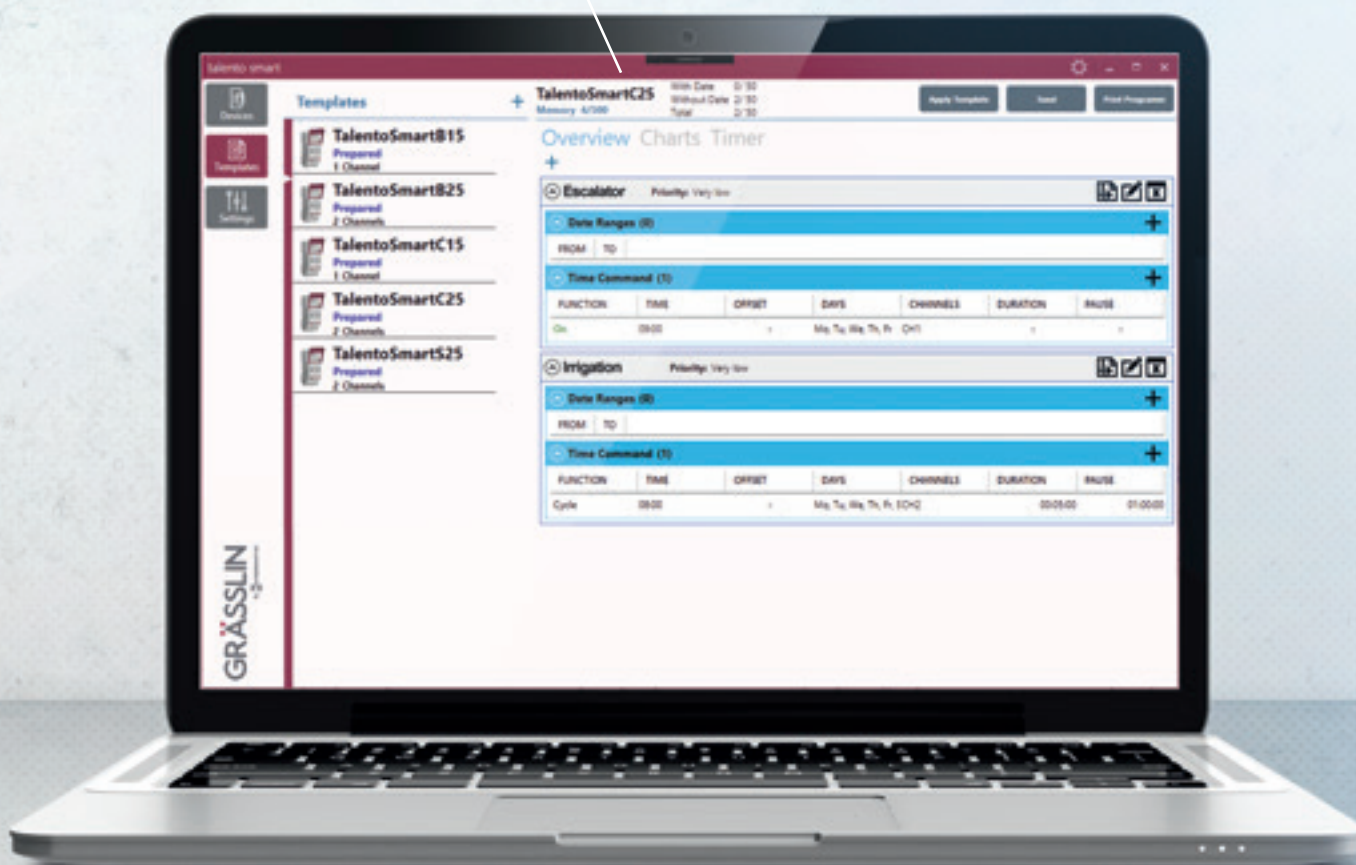


# LAN-GATEWAY TO IP-NETWORK AND CLOUD

## CONVENIENT DATA TRANSFER VIA LAN-MODUL

### INTELLIGENT SYSTEM

Easy grouping and management of large applications



### DATA TRANSFER VIA LAN NETWORK AND CLOUD

The LAN module forms the connection between the PC and talento smart S25 DIN-rail timers. No matter which country you are in and where the timer is located, all programmes can be transferred anywhere in the world via the LAN network and cloud. For specialists, it is now easier than ever to program on the PC using the free PC software and then transfer and export this programming to the talento smart S25 via LAN network in direct remote access. This makes for a convenient solution with significant time savings.

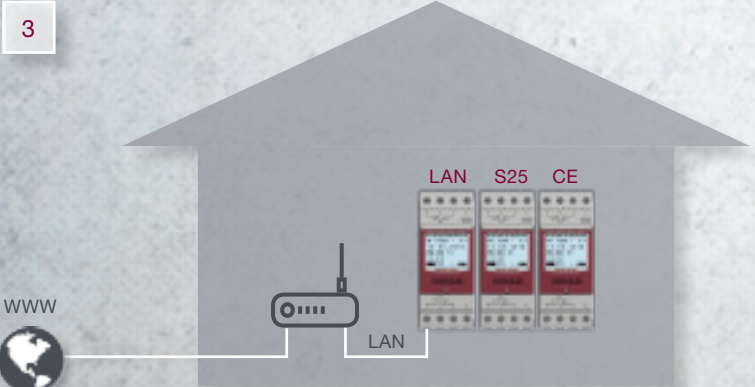
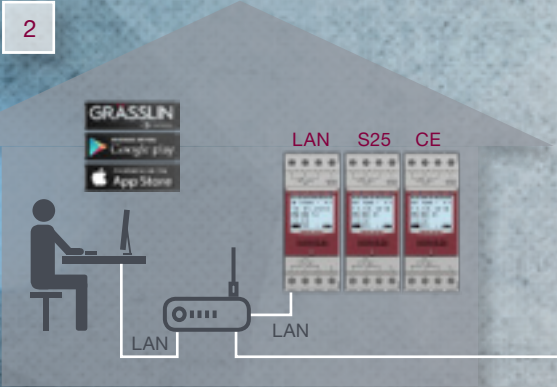


# talento smart: Communication channels

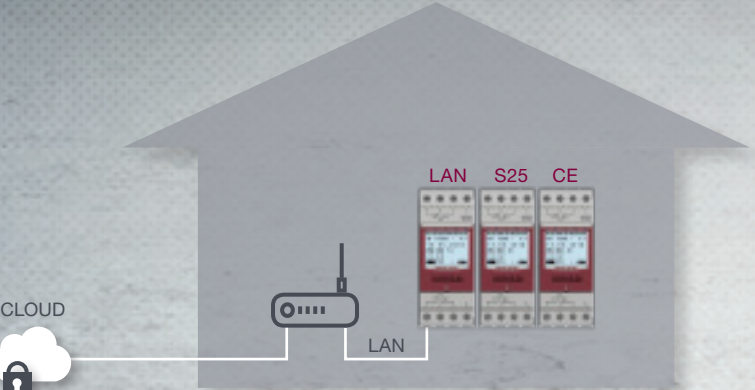
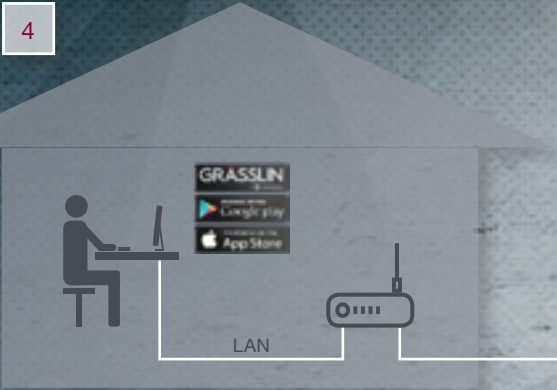
The individual members of the talento smart product line rely on different communication technologies for data transfer:



**1: BLUETOOTH TECHNOLOGY**  
Data transfer from a smartphone, tablet or PC to the talento smart DIN-rail timer or between the various talento smart components.



**2+3: LAN NETWORK, IP-BASED**  
Flexible configuration options in IPv4 networks. Supports dynamic DNS for accessing distant installation locations.



**4: LAN NETWORK, IoT-BASED**  
Innovative, cloud-supported commissioning without detailed knowledge of the LAN network configurations. Highly secure communication between user and the talento smart system.



## One-module-wide time switch: talento smart B10 mini

The talento smart B10 mini can perform all the tasks required of a classic DIN-rail timer with the added advantage of a space-saving design. The one-module-wide DIN-rail timer dispenses with a display and it can only be programmed via app. All programs can be created easily and clearly on a smartphone, tablet or PC, and then be transferred quickly and wirelessly to the timer via a Bluetooth interface.



### SPACE-SAVING DESIGN

Can perform all the tasks required of a classic DIN-rail timer with the added benefit of a slim design.

### COMBINATION OPTIONS

Programmes can be created with or without dates. Weekdays can be combined and grouped together individually.

### POWER RESERVE

The timer has a power reserve of 72 hours, which can be charged at any time.

### STATUS

LEDs on the front indicate the status of the timer.

ON BOARD TECHNOLOGY



**WILD  
CARD**

### TECHNICAL INNOVATIONS

Despite its simple design, the talento smart B10 mini has a large number of useful functions. Developed specifically for the requirements of installers, it is equipped with a variety of technological innovations such as the WILDCARD function for simple programming of recurring events or the QUICK COPY function for a quick transfer of existing programs. Moreover it offers space for date-independent and date-dependent programs, with a total capacity of 100 memory slots.



## talento smart: Always a good choice

The talento smart product family features three series which differ in functionality. A consistent operating philosophy across all models enables users to work quickly and easily and thereby significantly cut the time spent on projects.

The talento smart system is continuously being advanced and complemented by additional models and modules.

talento smart  
BASIC



Cost-efficient solution for  
standard tasks

talento smart  
CLASSIC



Extended functionality for  
more complex tasks

	talento smart B15	talento smart B25	talento smart C15	talento smart C25	
Product-No.	43.02.0001.1	43.02.0002.1	43.03.0001.1	43.03.0002.1	43.03.0003.1
EAN Code	4010940044718	4010940044725	4010940044749	4010940044756	4010940044787
<b>Functions</b>					
ON	●	●	●	●	●
OFF	●	●	●	●	●
Pulse			●	●	●
Cycle			●	●	●
Astro			●	●	●
Random ON/OFF			●	●	●
<b>Programs</b>					
with date	1	2	50	50	50
without date	10	10	50	50	50
Memory spaces	100	100	500	500	500
Channels	1	2	1	2	2
Current output	Changeover, potential-free, opening width < 3 mm, phase-independent (zero crossing)	Changeover, potential-free, opening width < 3 mm, phase-independent (zero crossing)	Changeover, potential-free, opening width < 3 mm, phase-independent (zero crossing)	Changeover, potential-free, opening width < 3 mm, phase-independent (zero crossing)	Changeover, potential-free and switch contact, opening width < 3 mm, phase-independent
Supply voltage	AC 110-230 V ± 10 % 50-60 Hz	AC 110-230 V ± 10 % 50-60 Hz	AC 110-230 V ± 10 % 50-60 Hz	AC 110-230 V ± 10 % 50-60 Hz	AC/DC 12/24 V ± 10 % 50-60 Hz



## TECHNICAL DATA

<b>Elektrische Daten</b>	
Current capacity - ohmic load	16 A / 250 V AC
Current capacity - inductive load cos.phi 0.6	10 A / 250 V AC
Load incandescent / halogen lamp	2.600 VA
Load fluorescent lamps	730 VA (serial compensated) 1.000 VA (Duo-switch) 1.000 VA (non-compensated) 1.000 VA (serial compensated)
Load compact fluorescent lamp	14 x 23 W, 16 x 20 W, 16 x 15 W, 18 x 11 W, 22 x 7 W
Load LED-lamps < 2 W	100 W
Load LED-lamps ≥ 2 W	600 W
Load sodium-vapour lamp - non-compensated	1 x 400 W, 2 x 250 W
Load sodium-vapour lamp - serial compensated	1 x 250 W (32 µF), 1 x 400 W (45 µF), 2 x 150 W (20 µF)
Load mercury-vapour lamp - serial compensated	1 x 400 W (25 µF), 1 x 700 W (40 µF), 2 x 250 W (18 µF), 4 x 125 W (10 µF), 6 x 50 W (7 µF)
Load mercury-vapour lamp - non-compensated	1 x 700 W, 2 x 250 W, 4 x 125 W
Current capacity - DC	300 mA / 60 V DC 800 mA / 24 V DC
Power consumption	< 1 VA (Standby-mode)
Accuracy	± 0,3 seconds/day @ 20° C
Power reserve	8 years, programs saved in EEPROM
<b>Power connection</b>	
Device	Screw terminal with wire protection max. 2,5 mm <sup>2</sup> captive screw terminals
<b>Communication method</b>	
Radio signal	Bluetooth 4.0
<b>Operating specifications</b>	
Handschalter	Automatic mode, Fix ON/OFF, Override
Tempering protection	PIN-code, sealable
Programming	Time switch, PC, mobile devices
Meters	Hours counter with maintenance mode
<b>Display and format</b>	
Display illumination	White
Time format	12h (AM/PM), 24h (factory pre-set)
Summer/winter time adjustment	automatic, date-based, can be deactivated
Status indicator	Switch position display
<b>Environmental conditions</b>	
Temperature (operation)	-20° C ... +55° C
<b>General specifications</b>	
Number of modules	2
Weight	180 g / 200 g
Material	Thermoplastics, self-extinguishing & high-temperature resistant
Mounting	DIN rail
Languages	CS, DA, DE, EN, ES, FI, FR, HU, IT, NL, NO, PL, PT, SV
<b>Compliance with standards</b>	
Protection type	IP20
Protection class	II, according to corresponding mounting
Approval mark	CE, FCC, VDE



## Trouble-free expansion: talento smart S25

The system version talento smart S25 enables specialists to create an overall system with up to 8 channels, when combined with the talento smart CE2 expansion modules.

talento smart  
SYSTEM



System version with maximum functionality

talento smart  
CHANNEL EXTENSION



Channel extension for setting up a system with up to 8 channels

	talento smart S25	talento smart CE2
Product-No.	43.04.0001.1	43.04.0004.1*
EAN Code	4010940044763	4010940045463
<b>Functions</b>		
ON	●	●*
OFF	●	●*
Pulse	●	●*
Cycle	●	●*
Astro	●	●*
Random ON/OFF	●	●*
<b>Programs</b>		
with date	80	
without date	80	
Memory spaces	800	
Channels	2	2
Current output	Changeover, potential-free, opening width < 3 mm, phase-independent (zero crossing)	Changeover, potential-free, opening width < 3 mm, phase-independent (zero crossing)
Supply voltage	AC 110-230 V ± 10 % 50-60 Hz	AC 110-230 V ± 10 % 50-60 Hz

\* only in connection with talento smart S25



## TECHNICAL DATA

<b>Electrical data</b>	
Current capacity - ohmic load	16 A / 250 V AC
Current capacity - inductive load cos.phi 0.6	10 A / 250 V AC
Load incandescent / halogen lamp	2.600 VA
Load fluorescent lamps	730 VA (serial compensated) 1.000 VA (Duo-switch) 1.000 VA (non-compensated) 1.000 VA (serial compensated)
Load compact fluorescent lamp	14 x 23 W, 16 x 20 W, 16 x 15 W, 18 x 11 W, 22 x 7 W
Load LED-lamps < 2 W	100 W
Load LED-lamps ≥ 2 W	600 W
Load sodium-vapour lamp - non-compensated	1 x 400 W, 2 x 250 W
Load sodium-vapour lamp - serial compensated	1 x 250 W (32 µF), 1 x 400 W (45 µF), 2 x 150 W (20 µF)
Load mercury-vapour lamp - serial compensated	1 x 400 W (25 µF), 1 x 700 W (40 µF), 2 x 250 W (18 µF), 4 x 125 W (10 µF), 6 x 50 W (7 µF)
Load mercury-vapour lamp - non-compensated	1 x 700 W, 2 x 250 W, 4 x 125 W
Current capacity - DC	300 mA / 60 V DC 800 mA / 24 V DC
Power consumption	< 1 VA (Standby-mode)
Accuracy	± 0,3 seconds/day @ 20° C
Power reserve	talento smart S25: 8 years, programs saved in EEPROM talento smart CE2: none
<b>Power connection</b>	
Device	Screw terminal with wire protection max. 4 mm <sup>2</sup> captive screw terminals
<b>Communication method</b>	
Radio signal	Bluetooth 4.0
<b>Operating specifications</b>	
Manual switch	Automatic mode, Fix ON/OFF, Override
Channels	2
Tempering protection	talento smart S25: PIN-code, sealable talento smart CE2: only in connection with talento smart S25
Programming	talento smart S25: Time switch, PC, mobile devices talento smart CE2: talento smart S25
Meters	Hours counter with maintenance mode
<b>Display and format</b>	
Display illumination	White
Time format	talento smart S25: 12h (AM/PM), 24h (factory pre-set) talento smart CE2: only in connection with talento smart S25
Status indicator	Switch position display
<b>Environmental conditions</b>	
Temperature (operation)	-20° C ... +55° C
<b>General specifications</b>	
Number of modules	2
Weight	200 g
Material	Thermoplastics, self-extinguishing & high-temperature resistant
Mounting	DIN rail
Languages	CS, DA, DE, EN, ES, FI, FR, HU, IT, NL, NO, PL, PT, SV
<b>Compliance with standards</b>	
Protection type	IP20
Protection class	II, according to corresponding mounting
Approval mark	CE, FCC, VDE



## Rapid and easy data transmission via LAN network

The LAN module talento smart LAN enables remote access to talento smart S25, in order to transfer or export programmes and thus to easily manage large applications.

talento smart  
LAN-MODULE



LAN module as gateway for remote access to talento smart S25

talento smart  
B10 mini



Single-module-wide timer for standard requirements

	talento smart LAN	talento smart B10 mini
Product-No.	43.04.0006.1	43.02.0005.1
EAN Code	4010940045746	4010940045890
<b>Funktionen</b>		
ON/OFF		•
<b>Programs</b>		
with date		1
without date		10
Memory spaces	800	100
Channels		1
Current output		Changeover, potential-free, opening width < 3 mm, phase-independent (zero crossing)
Supply voltage	AC 230 V ± 10% 50-60 Hz	AC 110-230 V ± 10 % 50-60 Hz

## TECHNICAL DATA

	talento smart LAN	talento smart B10 mini
<b>Electrical data</b>		
Current capacity - ohmic load		16 A / 250 V AC
Current capacity - inductive load cos.phi 0.6		10 A / 250 V AC
Load incandescent / halogen lamp		2.600 VA
Load fluorescent lamps		730 VA (serial compensated), 1.000 VA (Duo-switch)1.000 VA (non-compensated), 1.000 VA (serial compensated)
Load compact fluorescent lamp		14 x 23 W, 16 x 15 W, 16 x 20 W, 18 x 11 W, 22 x 7 W
Load LED-lamps < 2 W		Max. 100 W
Load LED-lamps ≥ 2 W		Max. 360 W
Load sodium-vapour lamp - non-compensated		1 x 400 W, 2 x 250 W
Load sodium-vapour lamp - serial compensated		1 x 250 W (32 µF), 1 x 400 W (45 µF), 2 x 150 W (20 µF)
Load mercury-vapour lamp - serial compensated		1 x 400 W (25 µF), 1 x 700 W (40 µF), 2 x 250 W (18 µF), 4 x 125 W (10 µF), 6 x 50 W (7 µF)
Load mercury-vapour lamp - non-compensated		1 x 700 W, 2 x 250 W, 4 x 125 W
Current capacity - DC		300 mA / 60 V DC, 800 mA / 24 V DC
Power consumption	4W	< 1 VA (Standby-mode)
Power reserve		72 h, programs saved in EEPROM
<b>Power connection</b>		
Device	Screw terminal with wire protection max. 2,5 mm <sup>2</sup> captive screw terminals	Screw terminal with wire protection max. 2,5 mm <sup>2</sup> captive screw terminals
Network connection (Ethernet)	RJ45	
<b>Communication method</b>		
Radio signal	Bluetooth 4.0	Bluetooth 4.0
Protocols	HTTP, HTTPS, TCP/IP, DHCP, UDP, SNMP, MQTT, ICMP	
<b>Operating specifications</b>		
Manual switch		Automatic mode, Fix ON/OFF, Override
Manipulationsschutz über App	PIN-code, sealable	PIN-code, sealable
Programming	Gateway	Time switch, PC, mobiles
Memorie spaces		100
Meters for App		Hours counter with maintenance mode via App
<b>Display and format</b>		
Summer/winter time adjustment via app		Automatic, date-based, can be deactivated
Status indicator	Switch position display	Switch position display 2 LEDs
Display illumination	White	
<b>Environmental conditions</b>		
Temperature (operation)	-20° C ... +55° C	-20° C ... +55° C
<b>General specifications</b>		
Number of modules	2	1
Weight	180 g / 200 g	100 g
Material	Thermoplastics, self-extinguishing & high-temperature resistant	Thermoplastics, self-extinguishing & high-temperature resistant
Mounting	DIN rail	DIN rail
Languages	CS, DA, DE, EN, ES, FI, FR, HU, IT, NL, NO, PL, PT, SV	
<b>Compliance with standards</b>		
Protection type	IP20	IP20
Protection class	II, according to corresponding mounting	II, according to corresponding mounting
Approval mark	CE	CE, FCC



# GRÄSSLIN

Grässlin GmbH  
Bundesstraße 36  
78112 St. Georgen  
Germany

☎ +49 (0) 7724/933-0  
🎧 +49 (0) 7724/933-500  
📠 +49 (0) 7724/933-240

🌐 [www.graesslin.de](http://www.graesslin.de)  
✉ [info@graesslin.de](mailto:info@graesslin.de)