



Overview

The **acre Intrusion AIC-1200 hybrid control panel** is the newest member of acre's comprehensive Intrusion portfolio designed to safeguard businesses, properties, and assets.

Ideal for light commercial use, this controller boasts 2-way wireless communication to ensure reliable interaction between the control panel and wireless detectors. Up to 65 zones with comprehensive wireless detection, control, and indication equipment are key elements for a reliable, cost effective, and fully wireless security system.

The AIC-1200 seamlessly integrates with acre Intrusion Connect, a SaaS-based application which provides a powerful platform allowing professionals to commission, configure and manage the entire intrusion controller range from acre. Engineered for quick installation, intuitive setup, and simplified maintenance, the AIC-1200 emerges as the ideal solution for installers and service providers seeking a robust and completely wireless intrusion system that is compliant with EN50151 Grade 2 standard. The intuitive AIC-1200 builds on previous acre Intrusion panels and keeps a similar configuration and business logic, reducing the need for extensive training.

Additionally, system owners benefit from acre's latest development, as they can take advantage of the single operating platform, the user-oriented mobile app service acre Intrusion Connect, and the acre Intrusion Connect web portal. This allows users to operate multiple intrusion systems from within a single interface, regardless of which controller type is in use... increasing system confidence, reducing the need for training, and enabling a unique user experience.

Key Features

- ✓ Fully wireless or wired intrusion panel
- ✓ Cost effective all-in-one solution
- ✓ Onboard 4G LTE-M Modem
- ✓ Onboard Ethernet
- ✓ Front tamper
- ✓ Easy/Fast commissioning
- ✓ EN50136 communications
- ✓ Cause & effect logic
- ✓ Access control functions
- ✓ Audio & video verification
- ✓ Multi-language
- ✓ Acre Intrusion Connect ready
- ✓ Intuitive design reduces training needs
- ✓ Designed to comply with EN50131 Grade 2

Applications

- ✓ Light Commercial
- ✓ Residential
- ✓ Support for SIA DC09 IP

Approvals

- ✓ EN50131 Grade 2
- ✓ INCERT TO33
- ✓ SSF114 & SSF1014
- ✓ Complies with EN50131 Grade 2

Key Numbers



100 users



35 outputs



4 doors



65 zones



4 keypads



10 areas

Technical Information

Controller Details

Areas	10
Maximum number of zones	65
Number of on-board zones	1
EOL Resistor	Dual 4k7 (default), other resistor combinations selectable per zone
Number of on-board outputs	3 open collectors: internal bell, external bell, strobe
Maximum number of Outputs	35
IP-Communication	Yes
Event Memory	1'000 intrusion events, 1'000 access events
Multi-language Support	Multi-language support (EN plus 4 imported language files). Available language files: EN, GER, FR, ES, SV, NO, DA, FL, FI, CZ, NL, IT, TR
Firmware Upgrade	Local and remote upgrade for controller, peripherals and GSM
Calendars	4
Cause & Effect	8 trigger/8 logical outputs
Virtual Inputs	4
Boot Time	< 15sec

User Credentials

Users	100
Paces	100
Access Cards	100
SMS	32
Web Passwords	50
User Profiles	100

Connectivity	
Web Server	Embedded
USB Interface	1 USB-C (PC connection)
Ethernet	1 Ethernet (RJ45) full duplex 100Mbit

X-BUS	
X-BUS Interfaces	1
X-BUS Devices maximum	16
X-BUS I/O Expanders	16
X-BUS Keypads	4
X-BUS Door Expanders	2
X-BUS Output Expanders	2

Acre Intrusion Tools Installer

Commissioning Embedded Web Server / acre Intrusion Connect Pro

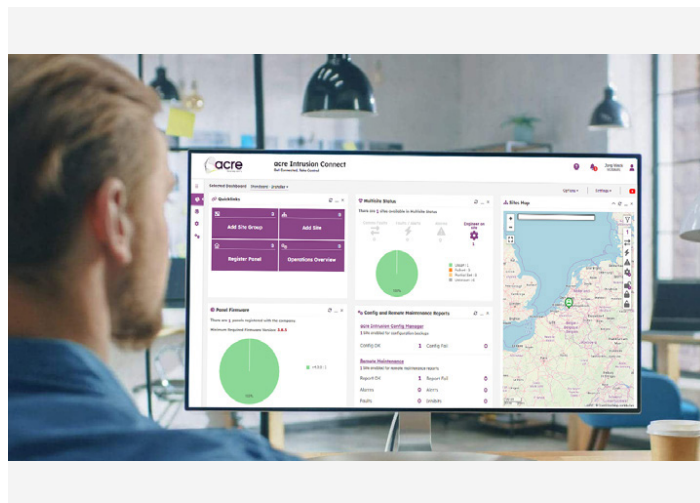
- Configuration tool
- Multi comms path support
- USB / Ethernet
- acre Intrusion Connect Cloud integration
- Remote access capability

Maintenance Embedded Web Server / acre Intrusion Connect

Cloud-based platform allowing to manage AIC-1200 panels remotely including instant and secure remote access for configuration and maintenance tasks, automated service modules to gather health status, create backups and manage users via secure and encrypted communication.

User Remote Operation

- acre Intrusion Connect Web Portal
- Mobile App
- SMS



Access Control

Door Controllers	2 maximum 4 entry doors or 2 entry/exit doors
Card Readers maximum	4
Supported Card Technologies	Mifare, Classic 1k, Cotag, DESfire, EM4102, Wiegand (26 & 37 bits, HID Corp 1000)

Two-Way Wireless

Wireless Gateway	embedded
Wireless Keypads	4
Wireless Repeaters	4
Wireless Detectors maximum	64
Wireless Output Devices maximum	16
FOBs maximum	64

Transmission

IP Dialer EDP/FlexC	yes/yes
Internal Modem	embedded - 4G LTE-M
SIA DC09 IP	Yes
FlexC maximum number supported ATS	3
SIA DC09 IP maximum number of supported receivers	3 in total (SP/DP)
FlexC maximum number supported ATP	8
Event Profiles	5
Command Profiles	5
Event Exceptions	10

Mechanical/Environmental

Size/Dimensions	255 x 233 x 86mm (HxWxD)
Enclosure Colour	Signal white (RAL9003)
Enclosure Material	ABS
PCB Colour	Blue
Gross Weight (kg)	1.05Kg
Net Weight (kg)	0.95Kg
Operating Temperature	-10 to +55°C
Relative Humidity	Max 93% (non-condensing)
Tamper Contact	Front spring tamper, 1 auxiliary tamper input
IP/IK Rating	IP30/IK06

The screenshot displays the acre security monitoring interface. It features a top navigation bar with a search field and user information. The main content area is divided into several sections:

- Hardware List:** A table listing various hardware units with their status (e.g., Online, Offline) and locations (e.g., Home-7, Home-8).
- acre Intrusion Area Status:** A pie chart showing the distribution of intrusion areas across different states: 20-Unknown, 25-Unset, 79-Fullset, 21-Unset, 75-Fullset, 2-Partialset, and 10-Unknown.
- acre Intrusion Firmware:** A pie chart showing the distribution of intrusion firmware versions: 20-v4.0.0, 10-v4.0.1, 78-v5.14.1, and 20-v4.0.0.
- Live Events:** A list of real-time events with filters for priority (Low, Mid, High, Critical) and a search bar. The events include user commands, area status changes, and access grants.

At the bottom of the dashboard, there is a status bar showing the version (24.4.645), testing instance information, user name (james.perrin), and connection status (Connected).

CMS/ARC

Professional Alarm Management Manufacturers
with EDP/FlexC protocol support

- AZUR SOFT
- ESI
- ENAI
- ADVANCIS

Technology Partners

More than 200 Integrations

- AAC
- ESI
- GENETEC
- AZUR SOFT
- LUNDIX
- MILESTONE
- QOGNIFY
- PRYSM
- ADVANCIS
- ENTELEC
- SIEMENS
- LENEL

Alarm Verification

Verification Zones	16 verification zones with either maximum 4 IP-cameras, 8 PIRcams and 16 audio devices
IP Cameras	4
Two-Way Wireless PIRcam	16
Video	Up to 16 pre/16 post event images (by JPEG resolution 640x480, maximum 1 frame/sec.)
Audio	Up to 60sec. pre/60sec. post audio recording
X-BUS Audio Expanders maximum SPCV340/ SPCV341/SPCV440	16
Audio Satellites Maximum	3 per Audio expander (maximum 48)

Electrical

Mains Voltage	230 VAC, + 10%/ -15%, 50 Hz
Power Supply	Type A (per EN50131-1)
Mains Fuse	625mA slow 5x20mm (replaceable part on mains terminal block)
AUX Power	Maximum current 12V AUX connector 500mA + ext bell: 500mA, + int. bell: 500mA
Current Consumptions	Standby mode ~70 mA Receive mode ~26 mA Transmit mode ~52 mA
Battery Code	YUASA NP7-12FR (12V/7Ah) – NF PowerSonic PS1270 (12V/7Ah) YUASA Yucel Y7-12FR (12V/7Ah)
Number of Batteries	1
Battery Charger	Maximum 72h to 80% of battery capacity

Compliance/Regulations

Environmental Class	Env class II - Indoor in general (e.g. sales floors, shops, restaurants, stairways, manufacturing and assembly areas, entrances and storage rooms)
CE Conformity	Yes
RoHS Conformity	Yes
Approval	EN50131-1 / EN50131-3 / EN50131-6, Grade 2 INCERT TO33 SSF114 & SSF1014

Ordering Information

Article Number	Description
AIC-1200	Acre Intrusion AIC-1200 Control Panel

