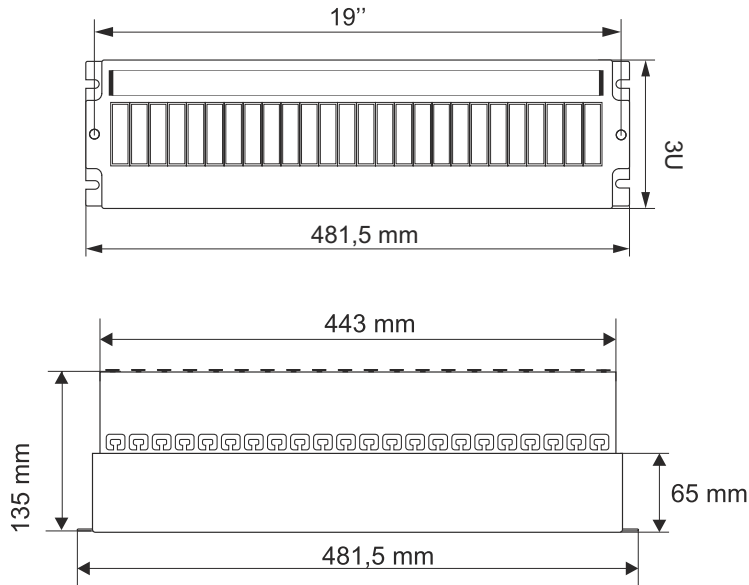
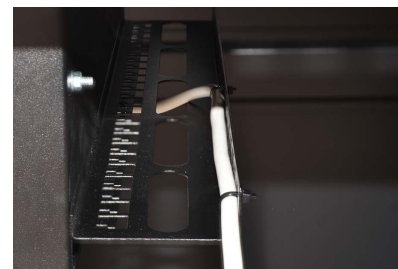


CODE: ARADIN1 v.1.1/1
 NAME: Voltage distribution panel 24xS

EN



INTENDED USE

The voltage distribution panel is intended for mounting electrical fuses, 'S' type, in a RACK 19" cabinet. The enclosure can accommodate max. 24 fuses, 1 S wide.

SPECIFICATIONS

Mounting dimensions:	RACK cabinet: W=19", H=3U	number of fuses: 24x1S
External dimensions:	W=481,5 , H=132, D=135 [mm, +/-2]	
Net/gross weight:	2,10 / 2,30 [kg]	
Materials:	bottom: sheet metal DC01, 1,0mm thick, RAL9005 + TH35 rail cantilever: sheet metal DC01, 0,7mm thick, RAL9005 + covers	
Use:	inside, IP20	
Notes:	- six-point fixing to the front RACK rails - 6 M6 screws + cage nuts included - the enclosure features a labelling field, 420x20	
Certificates, declarations:	RoHS	