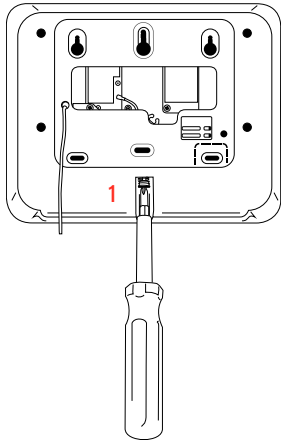
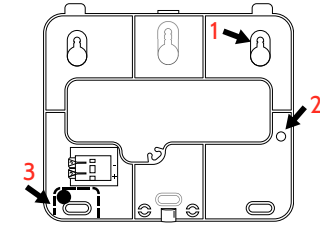


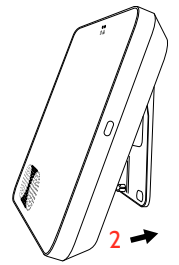
1 WALL MOUNT



1. With a small phillips screwdriver, undo the locking screw from the back of the panel and remove the SmartMount backplate.

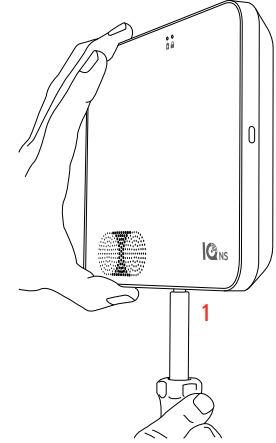


1. Mount the backplate to the wall using flat head screws* and appropriate wall anchors if needed, ensuring it is level.
2. If using the model with the legacy security radio, in the provided hole on the right hand side of the backplate drill a 1/4" hole in the wall and feed the white RF antenna into the wall.
3. A screw is required in break-away wall tamper for UL 2610 and EN Grade 2 installations.



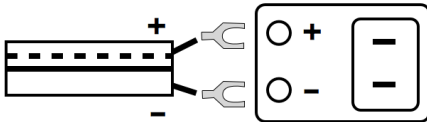
Connect the power supply to the barrel jack on the back of the panel.

1. Latch the top of the IQ4 NS onto the SmartMount backplate.
2. Swing the panel down towards the backplate and press firmly against the wall.



1. With a small phillips screwdriver, screw in the locking screw from the bottom of the panel to secure it to the wall.

2



Connect power supply
WARNING! Use 7vDC Power Supply ONLY

3



Press and hold the power button on the right side of the panel for 3 seconds to power up

4

CREATE POWERMANAGE ACCOUNT:



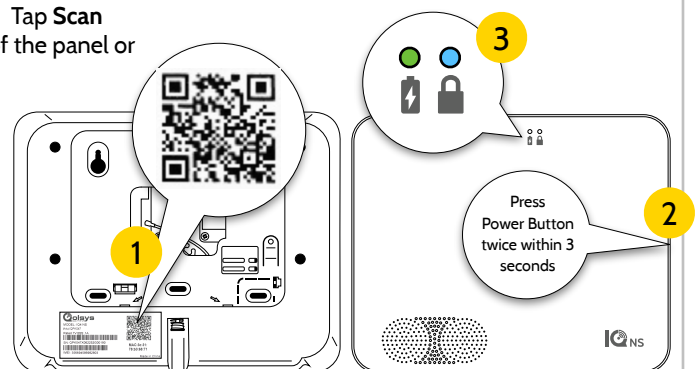
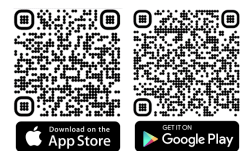
ALARM
INSTALL

CONNECT
ALARM

5 SETUP WIZARD

From your smart device, download "IQ Installer Interface" from the Apple or Google Play stores to connect to IQ4 NS over Wi-Fi to complete local system setup. To connect, complete the following steps:

1. Open the "IQ Installer Interface", tap **Start** on the phone screen to begin. Tap **Scan QR Code**, then position your phone and scan the QR label on the back of the panel or the side of the box. Tap **Continue**.
2. Press the **Power Button** twice within 3 seconds.
3. The **Status LED** will turn solid **Blue**. Tap **Next** on the screen.
4. Enter the default Installer (1111) or Dealer (2222) code to connect.
5. When prompted, change the default code to a new installer code.
6. Select **Dashboard**, then tap **Launch Wizard**.



UL/cUL Residential Fire and Burglary and UL/ULC Commercial Burglary Alarm Control Unit
Conforms to ANSI/UL Standards UL985, UL1023, & UL2610

Certified to ULC Sub. S545 & ULC Std. S304

Doc#: IQ4NS-QG-PM Rev Date: 08/13/24



Qalsys, Inc. proprietary. Reproduction without written consent is not permitted.

EULA: <https://www.johnsoncontrols.com/legal/digital/general-eula>

GOT QUESTIONS?

CONTACT TECH SUPPORT

intrusion-support@jci.com