



**SELF-POWERED SOUNDERFLASHERS**  
**TRADITIONAL AND OVER BUS FOR OUTDOOR USE**



The Ivy series self-powered sounder/flasher units are easy to program and to install. The external heavy duty cover swings down on easy-to-free hinge projections (located on the both sides of the backplate) to provide a very practical tool ledge. A metal inner-shroud protects all the components and reinforces the casing. Light-Emitting-Diode technology provides super-bright flasher signals and allows extra-low power consumption. The units also provide two status LEDs, positioned at the sides of the flasher.

In the "standard" model alarms are triggered by power cut or by the activation of the ancillary START input.

The "BUS" model connects to the Inim BUS and is supervised and managed by the control panel.

Ivy sounders are equipped with a test circuit that allows them to spot and report fault conditions to the control panel via a fault output.

They are also protected against dislodgement, forced opening, wire cutting and blow torch tamper.

The Ivy/F model has an extra foam-tamper protection provided by the internal infrared circuitry of the loudspeaker.

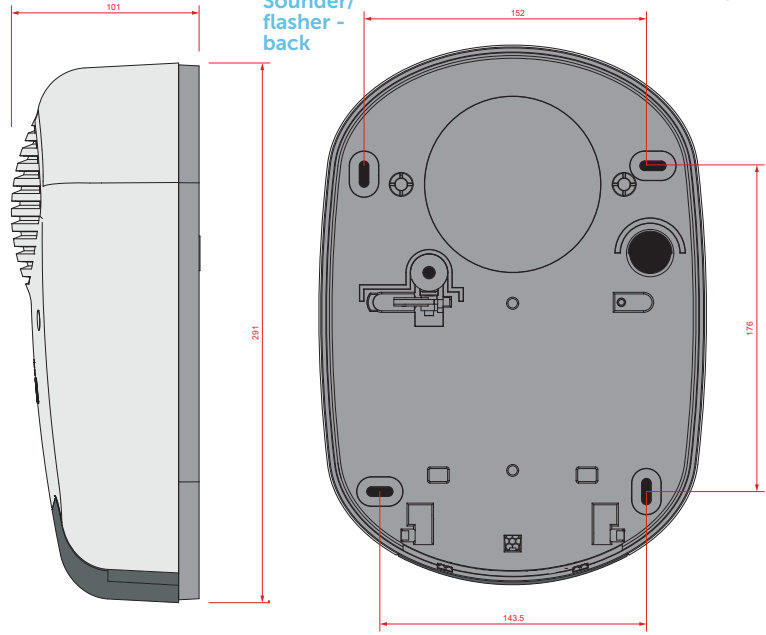
The Ivy series sounder/flasher units are also available in a "metal look" version.

Main features	Ivy sounder/flashers	Ivy sounder/flashers over I-BUS
Power supply	13.8Vdc	13.8Vdc (from I-BUS)
Current draw	60mA	45mA
Alarm trigger	Power input	On BUS, with characteristics in accordance with the event
Ancillary alarm trigger	START input	On bus
Alarm lock for maintenance	STOP input	On bus
Ancillary signal LED trigger	LED input	On bus
Fault signalling	FAULT output	On bus
Tamper signalling	Voltage free contact relay	On bus
Separate sound and flasher management	-	Yes
Volume adjustment	-	Yes
Power-voltage reading	-	Yes
Battery-voltage reading	-	Yes
Temperature reading	-	Yes
Anti-opening and anti-dislodgement protection		Yes
Blow-torch tamper protection		Yes
Foam tamper protection ("F" model only)		Yes
Metal inner-shroud		Yes
LED signal flasher		Yes
Parameter programmable from device		Yes
Sound pressure at 3m.		103dBA
Backup battery		12V - 2.1Ah
Protection Grade		IP34
Dimensions (HxWxD)		291x209x101 mm
Weight (without batteries)		2.2 Kg

Sounder/  
flasher -  
dimensions

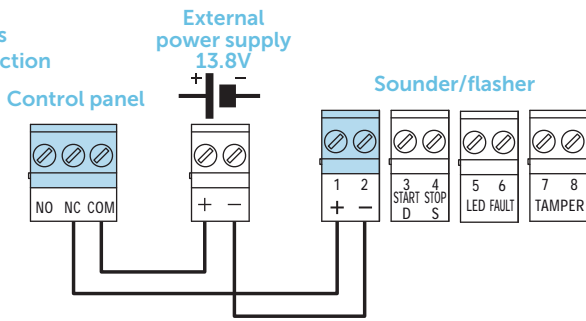


Sounder/  
flasher -  
back

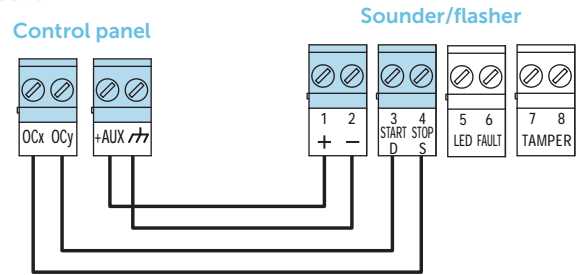


## CONNECTION DIAGRAMS

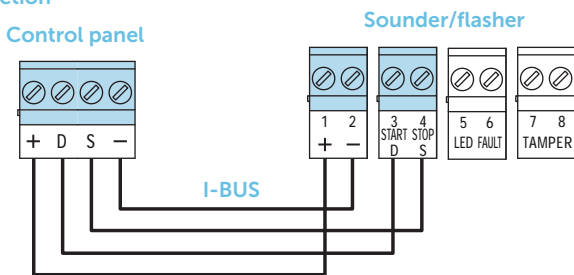
2 wires  
connection



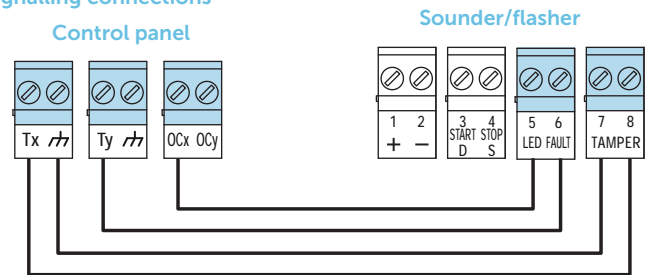
4 wires  
connection



I-BUS  
connection



Tamper, faults and LED activation  
signalling connections



## ORDER CODES

- Ivy:** self-powered sounder/flasher for outdoor use.
- Ivy-F:** self-powered sounder/flasher for outdoor use with antifoam protection.
- Ivy-M:** self-powered sounder/flasher for outdoor use, metal look.
- Ivy-FM:** self-powered sounder/flasher for outdoor use with antifoam protection, metal look.
- Ivy-B:** self-powered sounder/flasher for outdoor use, over I-BUS.
- Ivy-BF:** self-powered sounder/flasher for outdoor use with antifoam protection, over I-BUS.
- Ivy-BM:** self-powered sounder/flasher for outdoor use, metal look, over I-BUS.
- Ivy-BFM:** self-powered sounder/flasher for outdoor use with antifoam protection, metal look, over I-BUS.