

How to install Inim usb devices drivers

1. First installation

- Unzip “Prolific PL2303 driver v3.3.2.102 (2008-24-09) Win8_x64_x86”

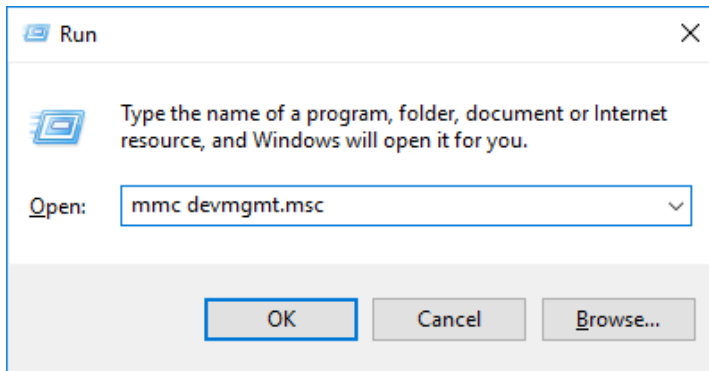
- Connect the usb-to-serial port convert to the PC



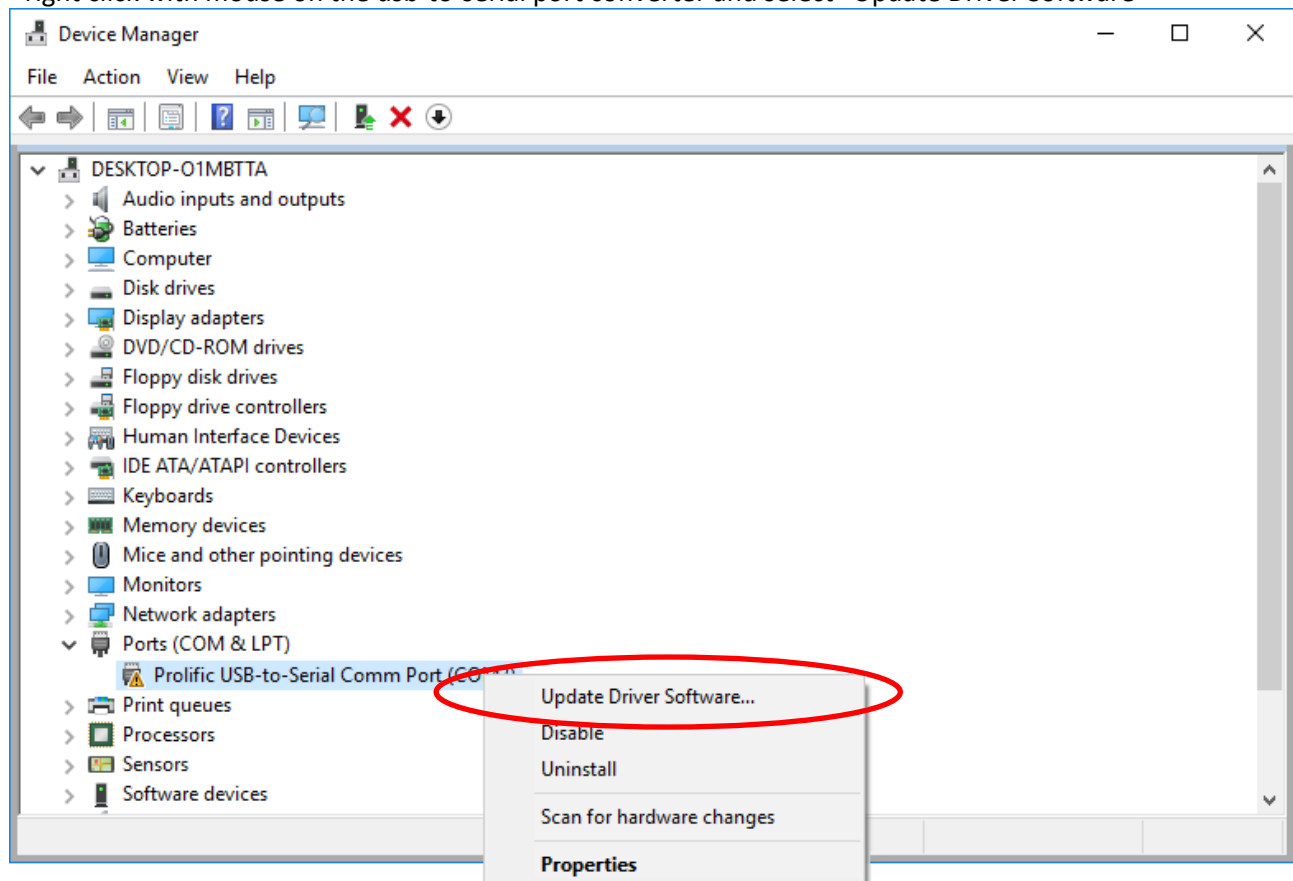
- Go to the Device Manager menu

To do this:

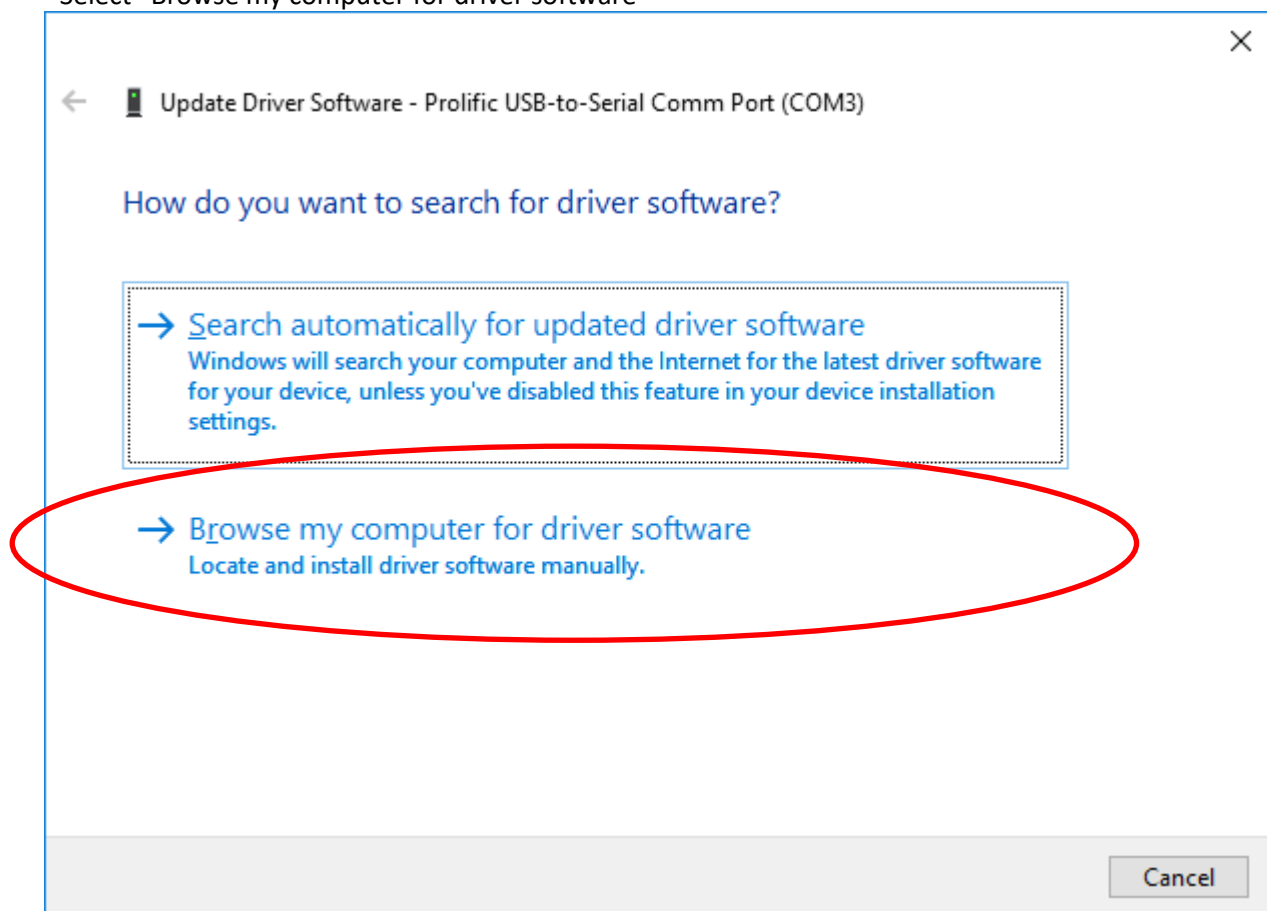
- Press at the same time Windows button + R
- Type “mmc devmgmt.msc” in the Run window



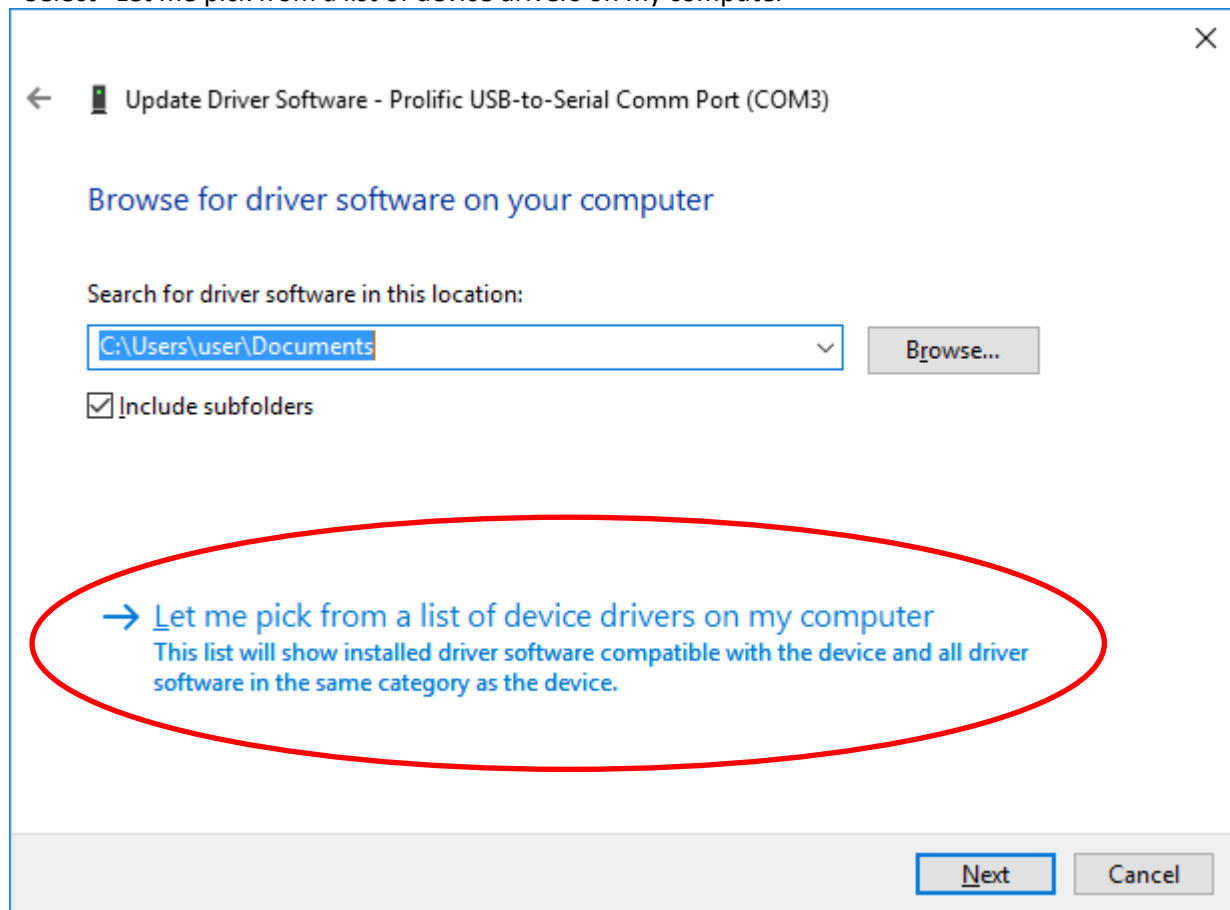
- right click with mouse on the usb-to-serial port converter and select "Update Driver Software"



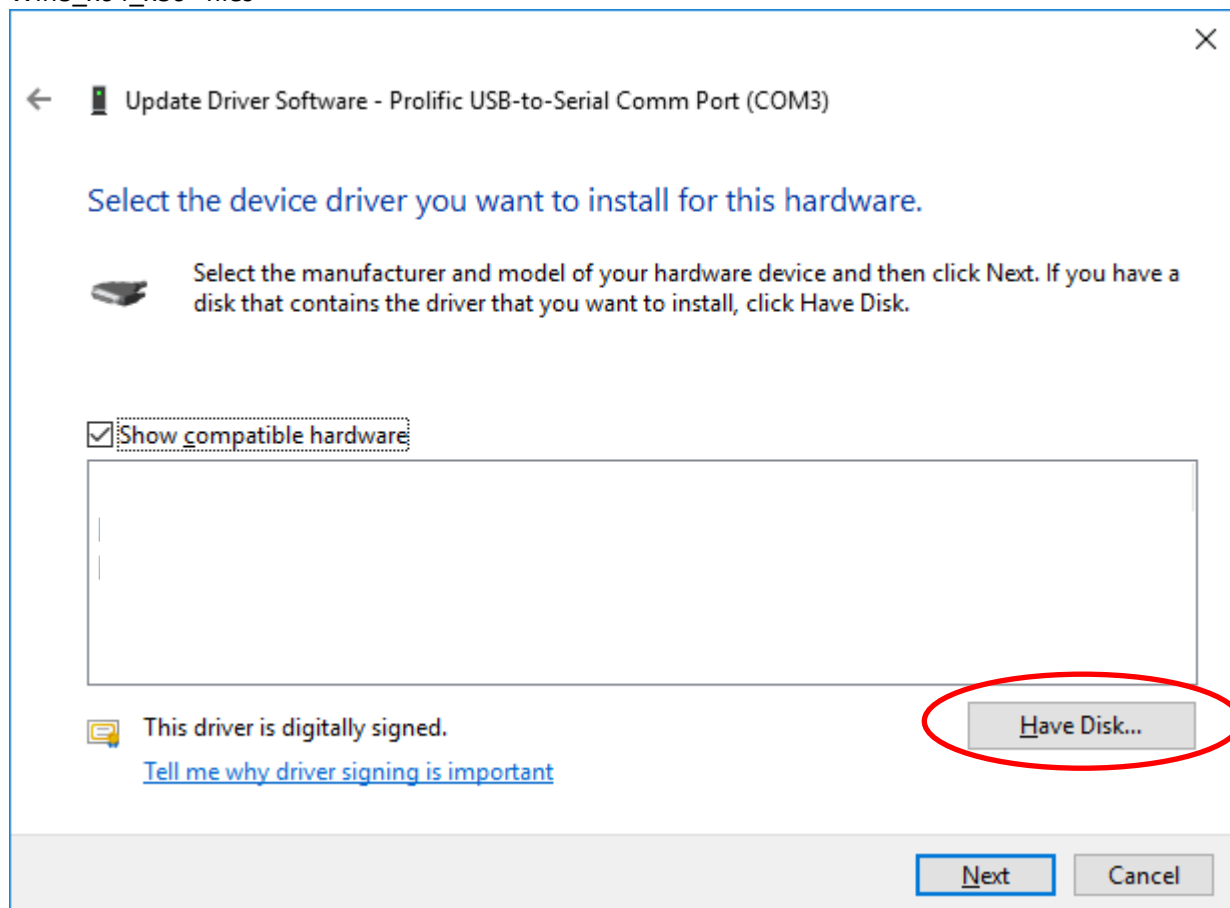
- Select "Browse my computer for driver software"



- Select "Let me pick from a list of device drivers on my computer"



- Select "Have Disk..." and select the folder with "Prolific PL2303 driver v3.3.2.102 (2008-24-09) Win8_x64_x86" files

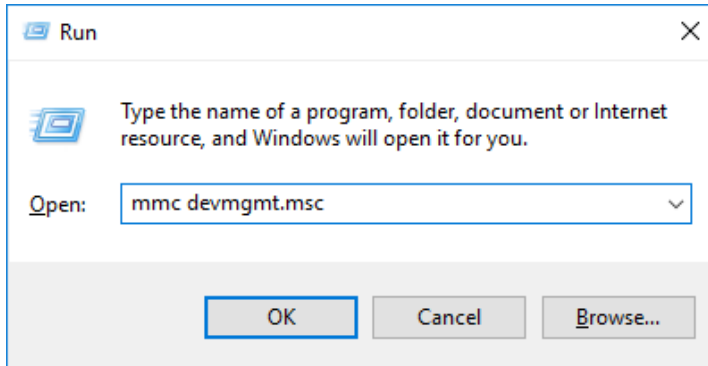


2. Next uses

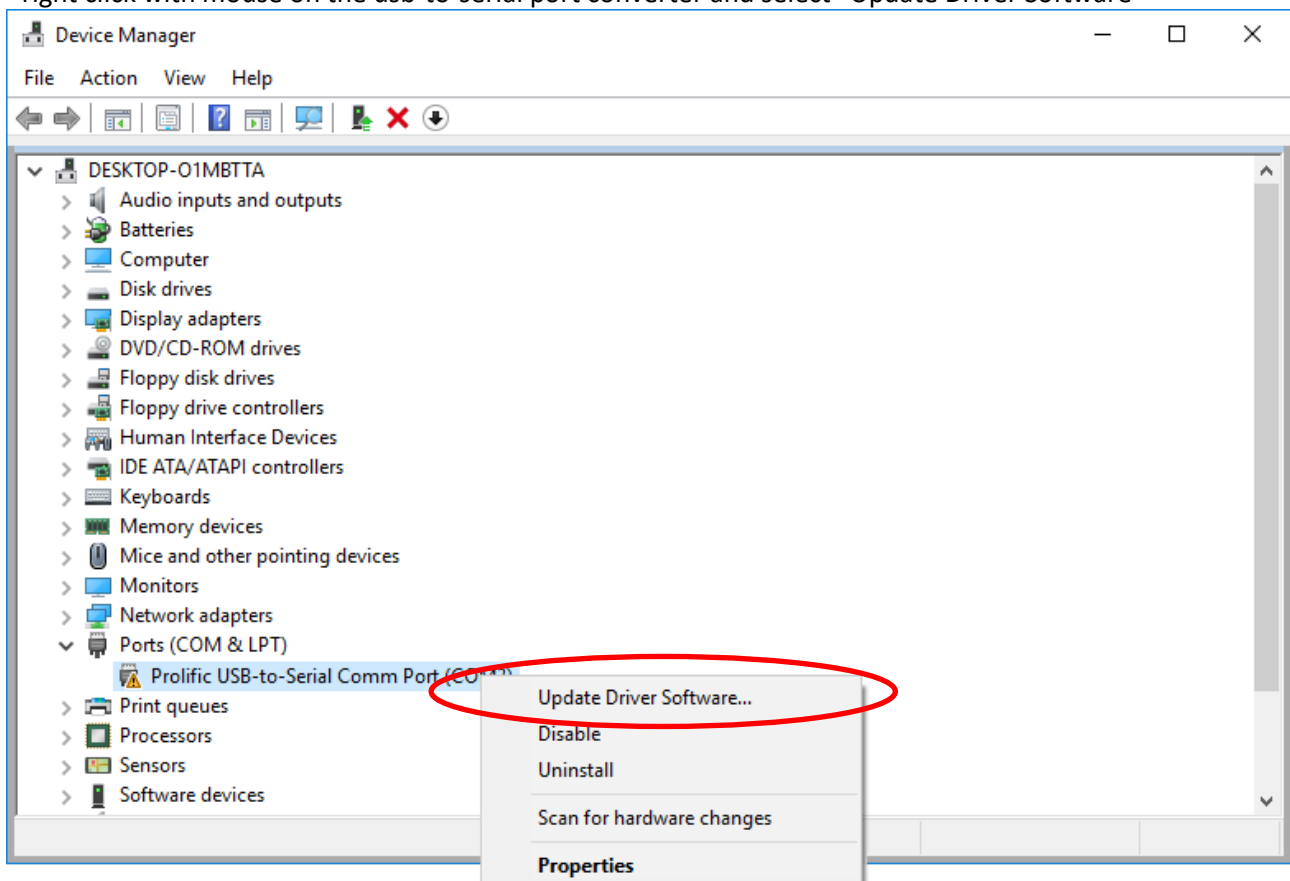
- Go to the Device Manager menu

To do this:

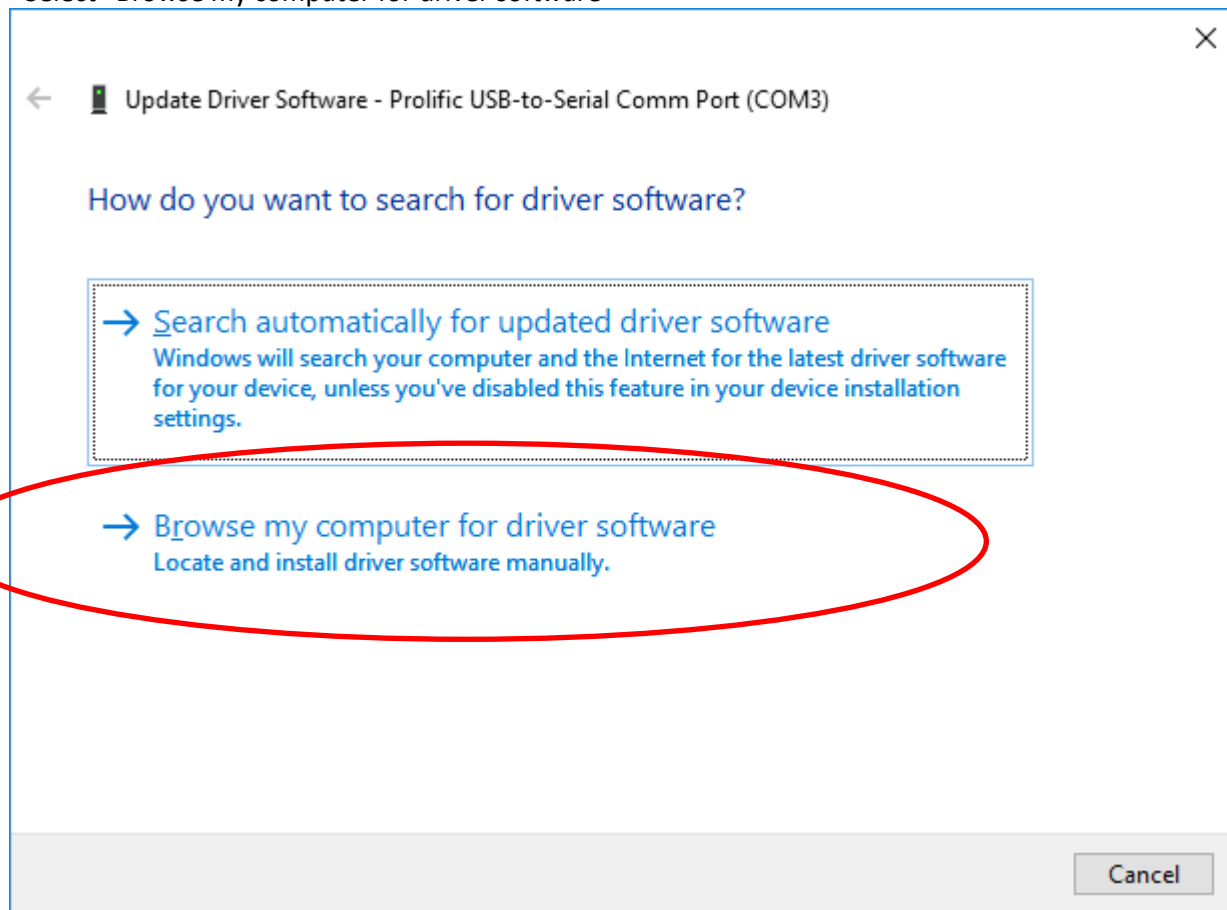
- Press at the same time Windows button + R
- Type "mmc devmgmt.msc" in the Run window



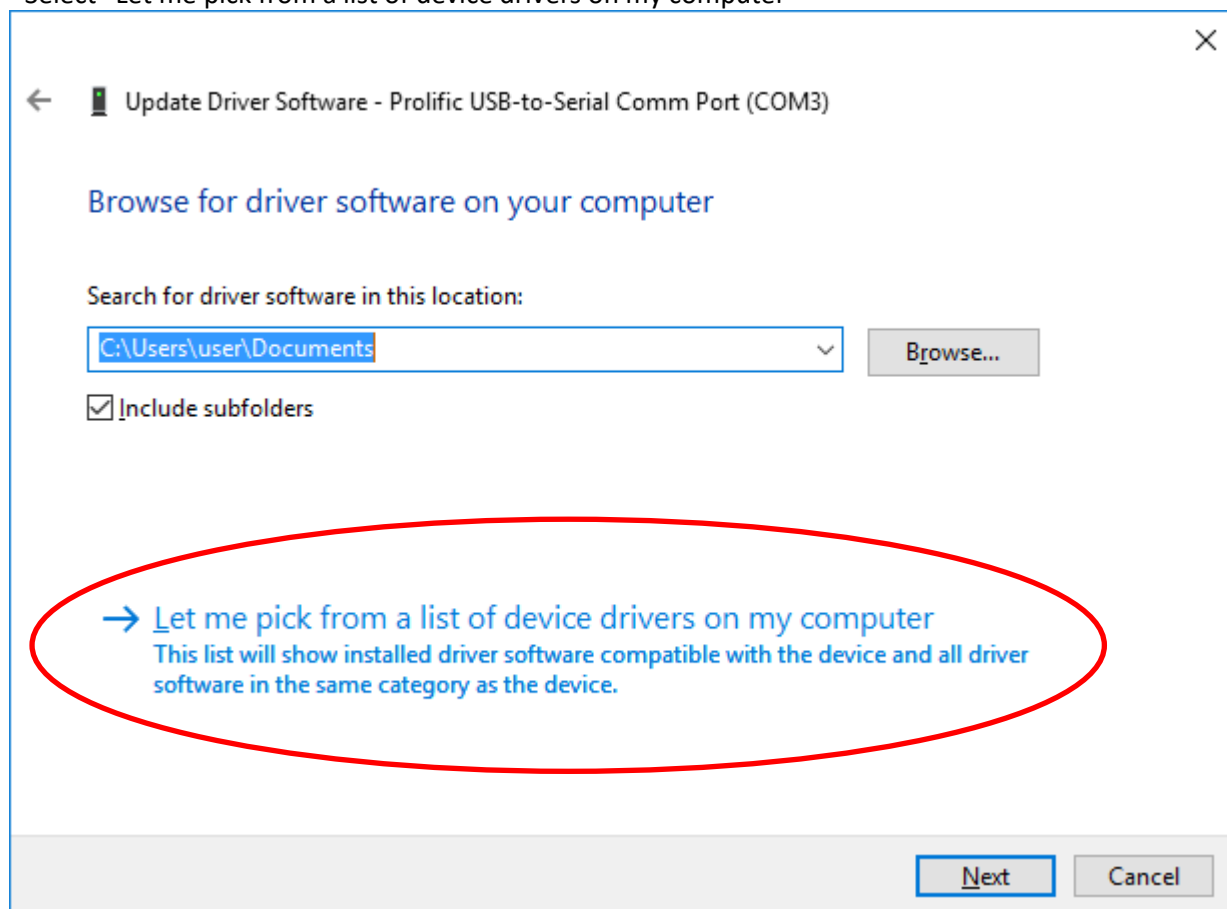
- right click with mouse on the usb-to-serial port converter and select "Update Driver Software"



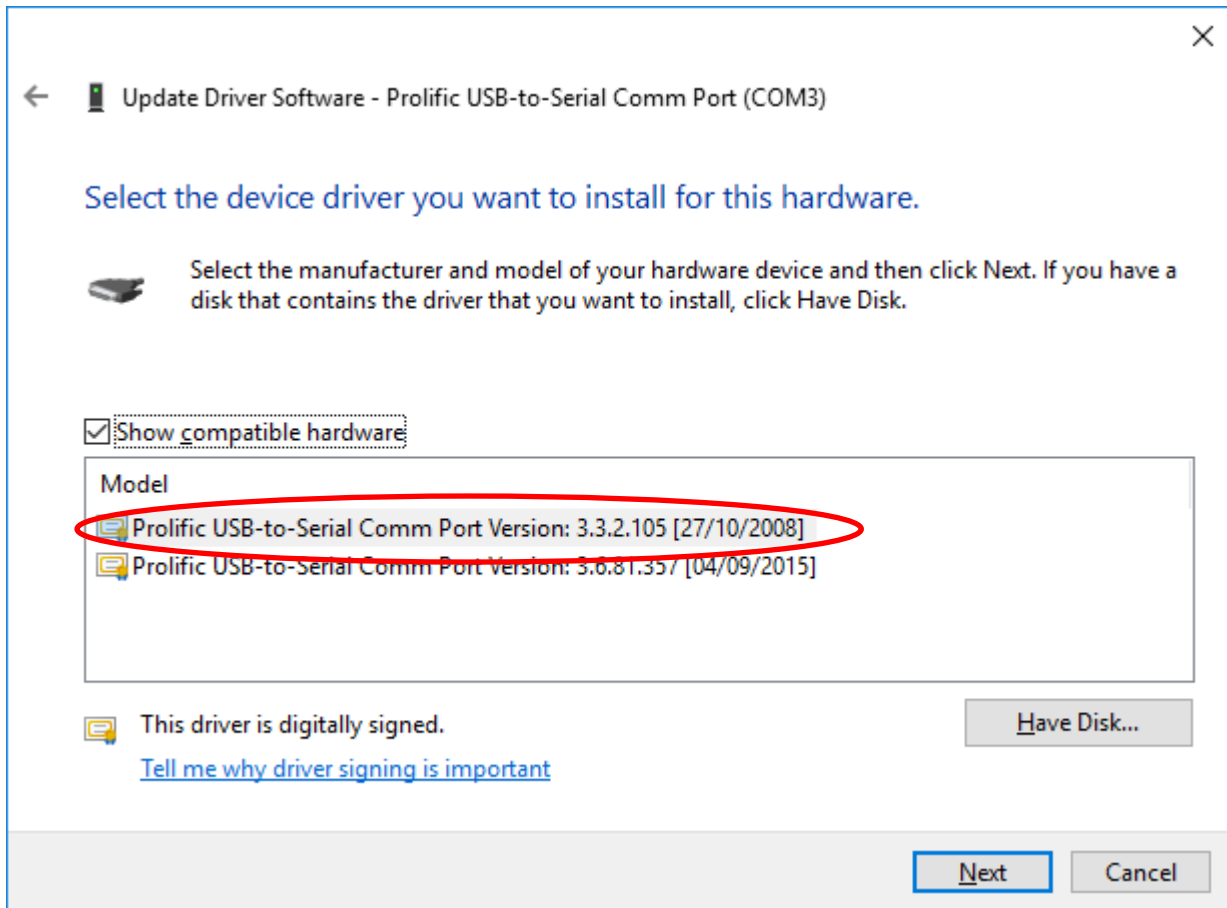
- Select "Browse my computer for driver software"



- Select "Let me pick from a list of device drivers on my computer"



- Select 2008 driver version and click Next



- Wait for the end of procedure

