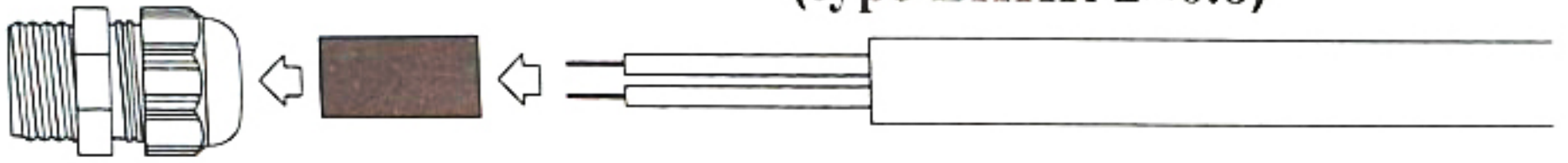


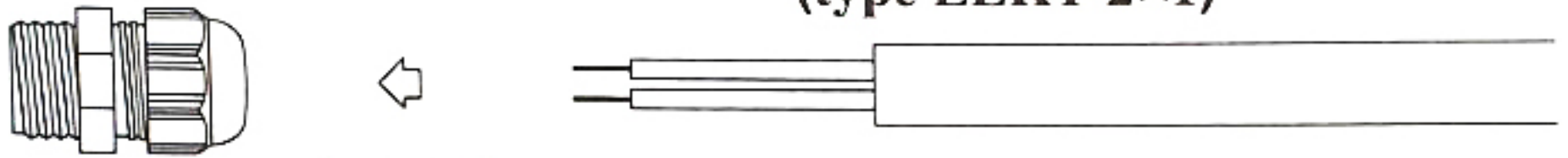
# IMPORTANT!

Outer cable diameter  $< 6\text{mm}$   
(type EKKR 2 $\times$ 0.6)



Insert rubber tube before installation of cable

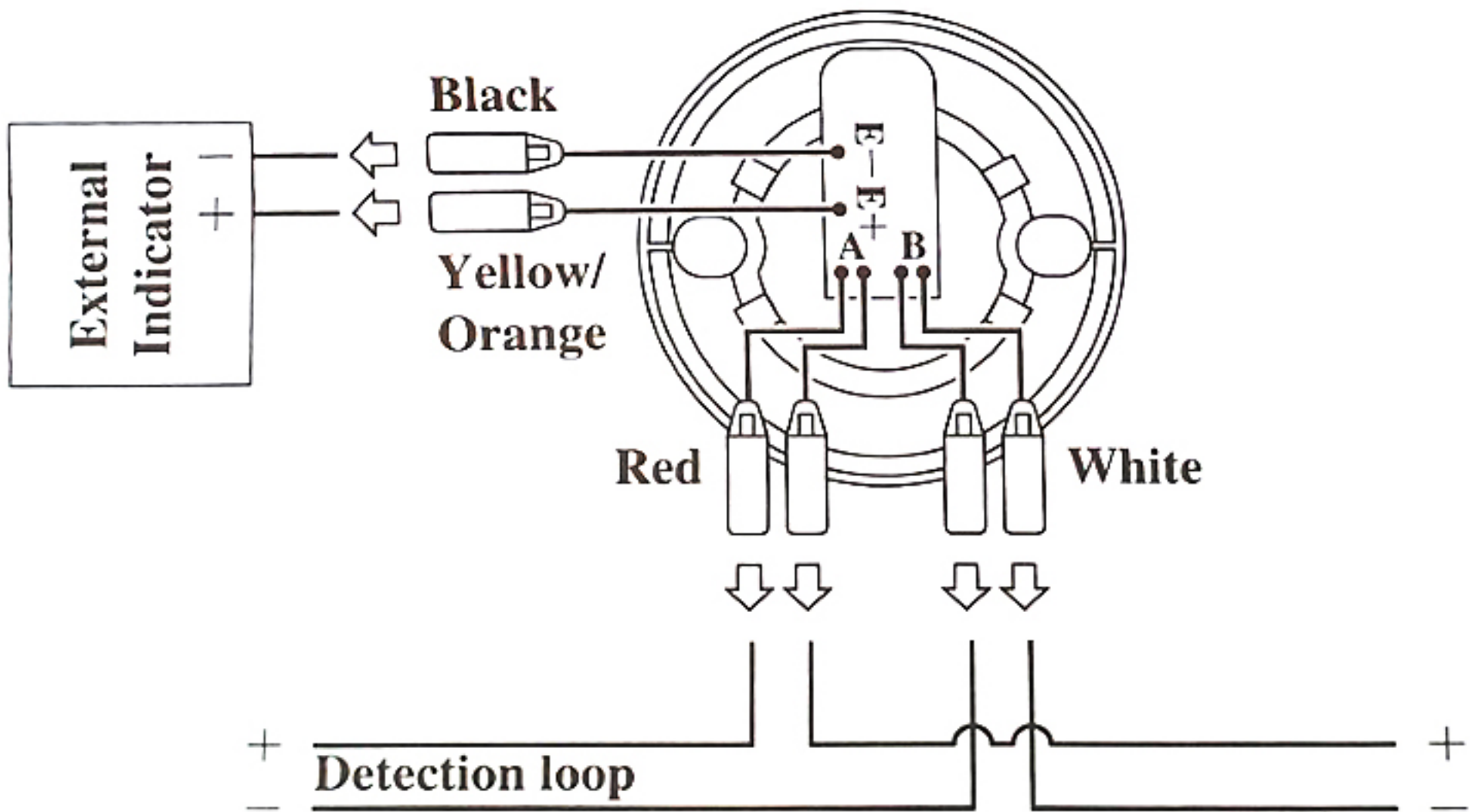
Outer cable diameter  $\geq 6\text{mm}$   
(type ELKY 2 $\times$ 1)



NO

Don't use rubber tube

## Installation instruction



Do not clean by rubbing or with solvents to avoid electrostatic hazard.



Do not install outdoor where it is exposed to sunlight and a continuous dust flow to avoid propagating brush discharges.



Do not apply impacts to protector.