

# S08

## SPINDLE ACTUATOR

### OPENING STROKE SIZES

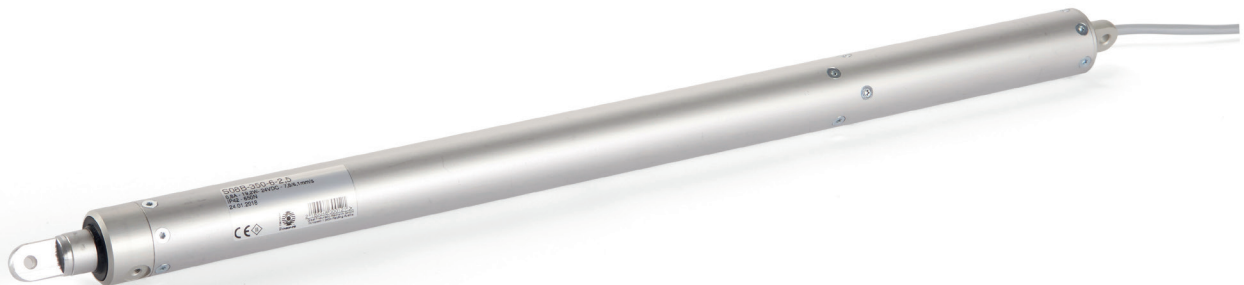
200, 300, 350, 400, 500, 550, 600, 750 or 1000 mm

### PUSH FORCE

650 N

### VOLTAGE

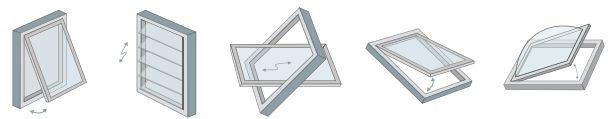
24V DC (+/- 10%)



### DESCRIPTION

24V electrically operated spindle actuator, in anodized aluminium enclosure. Anodized aluminium push rod. Various opening strokes available - 200, 300, 350, 400, 500, 550, 600, 750 or 1000 mm. Rated current 0.8 A. Shapely and space saving enclosure. Minimum space required when mounted at lower end Extremely low noise emission. Ambient temperature range -20 to +60°C, to VdS 2580 for 2hrs up to +110°C. Electronic disconnection at end of stroke / emergency stop on overload. Dimensions: see data sheet. Protection to DIN EN 60529: IP42 (for use in dry rooms). Light grey silicone supply lead brought out at lower end, length approx. 2.5 m. Temperature range -50 to +180°C (to DIN VDE 0282). Mounting at upper or lower end or at variable position by mounting kit. Diameter of push rod eye and lower end eye 6.1 mm

### WINDOW TYPES



### APPLICATION



COMFORT  
VENTILATION



SMOKE  
VENTILATION

### COLOURS

- Silver Anodised
- ⊗ Custom RAL colour

### CERTIFICATION

Certified and tested in accordance to EN 12101-2



## TECHNICAL DATA

Voltage	24V DC (+/- 10%)
Push Force	650 N
Pull Force	650 N
Opening Stroke	200, 300, 350, 400, 500, 550, 600, 750 or 1000 mm
Opening Speed	6.1 mm/s
Current Consumption	0.8 A
Operating Conditions	-20°C - +60°C
Switch-on Duration	S2 2.5 min
Colour	Silver Anodised or custom RAL colour
IP Rating	IP 42
Life Span	11,000 opening and closing movements
Delivery Includes	1 x Actuator (fixing brackets sold separately)
Flex Length	2.5 m
Cable Dimensions	2-Core
Min. window width	> 95 mm
Max. window width	< 1300 mm (use multiple actuators if wider)
Synchronisation	Yes (with SYNCHRO24)

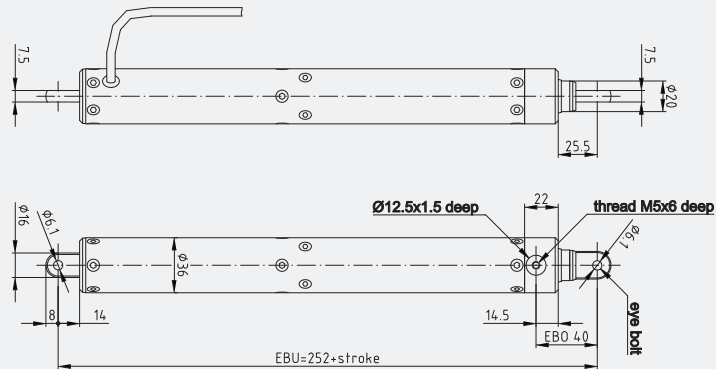
## ACCESSORIES

BS-S-O1	-	Upper End Mounting Kit
MBS-S-U1	-	Lower End Mounting Kit
BS-S-V1	-	Slide Mounting Kit

## PART CODES

S08B-200-6-2,5	-	S08B Actuator 24 V 200mm Silver
S08B-300-6-2,5	-	S08B Actuator 24 V 300mm Silver
S08B-350-6-2,5	-	S08B Actuator 24 V 350mm Silver
S08B-400-6-2,5	-	S08B Actuator 24 V 400mm Silver
S08B-500-6-2,5	-	S08B Actuator 24 V 500mm Silver
S08B-550-6-2,5	-	S08B Actuator 24 V 550mm Silver
S08B-600-6-2,5	-	S08B Actuator 24 V 600mm Silver
S08B-750-6-2,5	-	S08B Actuator 24 V 750mm Silver
S08B-1000-6-2,5	-	S08B Actuator 24 V 1000mm Silver

## DIMENSIONS



## CONTROLS



**SCU-4**  
AOV Control Unit



**SCU-CP**  
Override Switch



**PSU-2/4/8**  
24V DC Transformer



**SYNCHRO24**  
Tandem Control Unit

